

Management Guide

***Hy-Line®*****W-36**

USE OF THE MANAGEMENT GUIDE

The genetic potential of Hy-Line W-36 Commercial can only be realized if good poultry husbandry practices and management are used. This management guide outlines successful flock management programs for Hy-Line Variety W-36 Commercial based on field experience compiled by Hy-Line International and using an extensive commercial layer flock database of Hy-Line flocks from all parts of the world. Hy-Line International Management Guides are periodically updated as new performance data and/or nutrition information become available.

The information and suggestions contained in this management guide should be used for guidance and educational purposes only, recognizing that local environmental and disease conditions may vary and a guide cannot cover all possible circumstances. While every attempt has been made to ensure that the information presented is accurate and reliable at the time of publication, Hy-Line International cannot accept responsibility for any errors, omissions or inaccuracies in such information or management suggestions. Further, Hy-Line International does not warrant or make any representations or guarantees regarding the use, validity, accuracy, or reliability of, or flock performance or productivity resulting from the use of, or otherwise respecting, such information or management suggestions. In no event shall Hy-Line International be liable for any special, indirect or consequential damages or special damages whatsoever arising out of or in connection with the use of the information or management suggestions contained in this management guide.

TABLE OF CONTENTS

Summary of Performance Standards	1	Calcium Particle Size	14
Transportation to Farm	2	Feed Particle Size	15
Cage Brooding	2	Vitamins and Trace Minerals	15
Brooding Recommendations	3	Phase Feeding to Meet the Hen's Nutritional Needs	16
Lighting During Brooding Period	4	Growing Period Nutritional Recommendations	17
Drinking Systems	4	Transition Period from Grow to Peak Egg Production	18
Beak Treatment / Trimming	5	Production Period Nutritional Recommendations	19
Growth and Development	6	Dietary Nutrient Concentrations for Production Period	20
Growing Body Weights, Feed Consumption and Uniformity	7	Non-Fasting Molt Recommendations	21
Space Guidelines	7	Molt Diet Recommendations	22
Cage Systems Management	7	Post-Molt Nutrition Recommendations	23
Management Events for Commercial Layers	8-9	Disease Control	24
Good Lighting Practices	10	Vaccination Recommendations	25-27
Light Program for Light-Controlled Housing	10	Performance Table	28-29
Customized Lighting Programs for Open-Sided Housing ..	11	Performance Graph	30
Lighting Considerations	12	Post-Molt Performance Table	31
Use of Shades in Open-Sided Housing	12	Post-Molt Performance Graph	32
Midnight Feeding / Lighting Program	12	Egg Standards	33
Water Quality	13	Egg Size Distribution	33-35
Water Consumption	14	Post-Molt Egg Size Distribution	36
Air Quality	14	Feed Ingredient Tables	37-38

Summary of Performance Standards

GROWING PERIOD (TO 17 WEEKS):	
Livability	97%
Feed Consumed	5.07–5.44 kg
Body Weight at 17 Weeks	1.23–1.27 kg
LAYING PERIOD (TO 110 WEEKS):	
Percent Peak	95–96%
Hen-Day Eggs to 60 Weeks	255–262
Hen-Day Eggs to 90 Weeks	420–432
Hen-Day Eggs to 110 Weeks	506–517
Hen-Housed Eggs to 60 Weeks	251–257
Hen-Housed Eggs to 90 Weeks	407–418
Hen-Housed Eggs to 110 Weeks	484–500
Livability to 60 Weeks	96.6%
Livability to 90 Weeks	93.2%
Days to 50% Production (from hatch)	143 days
Average Egg Weight at 26 Weeks	57.1 g / egg
Average Egg Weight at 32 Weeks	59.7 g / egg
Average Egg Weight at 70 Weeks	63.6 g / egg
Average Egg Weight at 110 Weeks	63.9 g / egg
Total Egg Mass per Hen-Housed (18–90 weeks)	25.09 kg
Body Weight at 26 Weeks	1.48–1.52 kg
Body Weight at 32 Weeks	1.50–1.54 kg
Body Weight at 70 Weeks	1.54–1.58 kg
Body Weight at 110 Weeks	1.56–1.60 kg
Freedom From Egg Inclusions	Excellent
Shell Strength	Excellent
Haugh Units at 38 Weeks	91.4
Haugh Units at 56 Weeks	87.5
Haugh Units at 70 Weeks	86.0
Haugh Units at 80 Weeks	85.0
Average Daily Feed Consumption (18–90 weeks)	98 g / day per bird
Feed Conversion Rate, kg Feed/kg Eggs (20–60 weeks)	1.81–1.90
Feed Conversion Rate, kg Feed/kg Eggs (20–90 weeks)	1.87–1.97
Feed Utilization, kg Egg/kg Feed (20–60 weeks)	0.53–0.55
Feed Utilization, kg Egg/kg Feed (20–90 weeks)	0.51–0.54
Feed Consumption per 10 Eggs (20–90 weeks)	1.15–1.21 kg
Feed Consumption per Dozen Eggs (20–90 weeks)	1.35–1.46 kg
Condition of Droppings	Dry

Performance Summary data is based on results obtained from customers around the world. Please send your results to info@hyline.com. An easy to use record-keeping program, Hy-Line International EggCel, can be found at www.hylineeggcel.com.



Transportation to Farm

Transportation

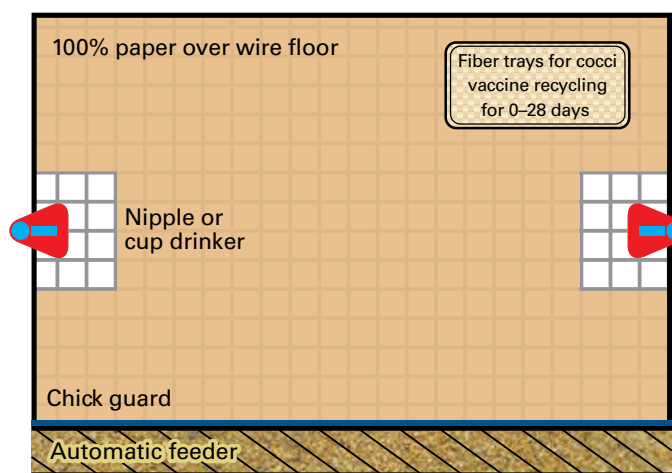
- Use a truck designed for transportation of chicks from hatchery to farm.
- Truck should be environmentally controlled, maintaining 26–29°C at 70% relative humidity (measured inside chick box); with a minimum air flow of 0.7 m³ per minute.
- Provide space between stacks of chick boxes for air flow.

Chick Placement

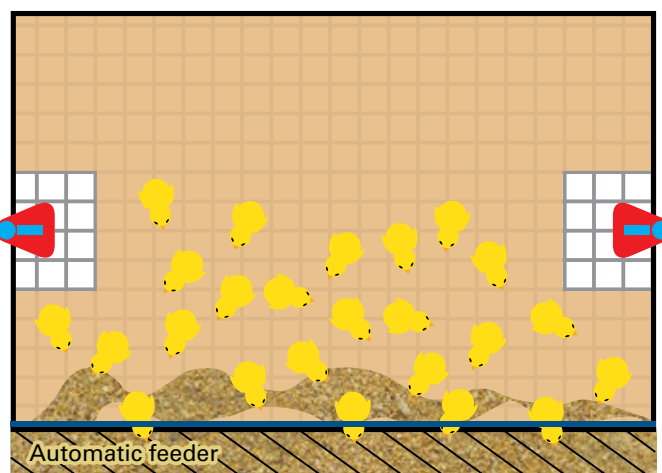
- Unload boxes quickly and gently place chicks in brooding area.
- Brood chicks in groups from similar aged breeder flocks.

Cage Brooding

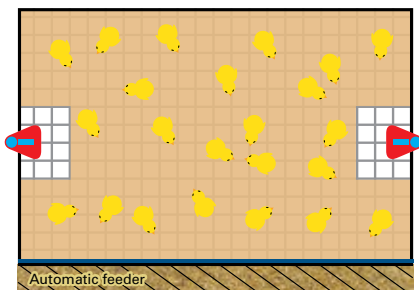
- Brooder house should be completely cleaned and disinfected well in advance of chick delivery. Confirm effectiveness of cleaning and disinfection with environmental swabs.
- Allow 2 weeks minimum downtime between flocks.
- Start chicks in upper tiered cages which are usually warmer and brighter. Ensure there are no shadows on drinkers.
- Chicks from young breeder flocks should be placed in warmer and brighter areas of the house.
- For more information on house preparation and brooding management, see the “Growing Management of Commercial Pullets” technical update at www.hyline.com.
- Pre-heat house at least 24 hours prior to chick arrival to warm house equipment.
- Place feed on cage paper 0–3 days to encourage consumption. For beak-treated chicks, feed on paper for 0–7 days.
- Place feed in front of permanent feeder to train chicks to move toward feeders.
- Fill automatic feed line to its highest level and adjust chick guards. Allow access to the automatic feeder from the first day.
- Remove paper at 7–14 days of age to avoid build-up of feces.
- Cage floors should not be slippery or sloped.
- Use vitamins and electrolytes in chicks’ water (avoid sugar-based products to prevent growth of microorganisms).
- Chicks’ body weight should double between arrival and 7 days of age.



Chick guard adjusted to allow access to feeder from first day

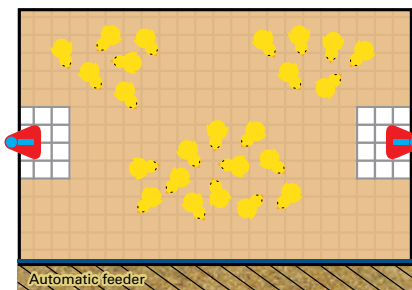


Place feed on paper near automatic feeder to train chicks



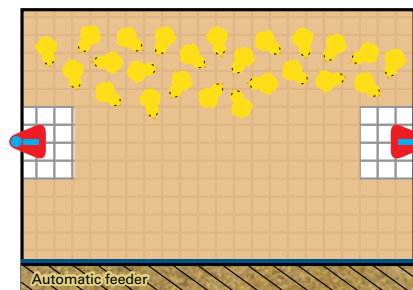
CORRECT

Chicks evenly distributed in cage, active and sounding content



COLD

Chicks gathered into groups sounding distressed



UNEVEN VENTILATION

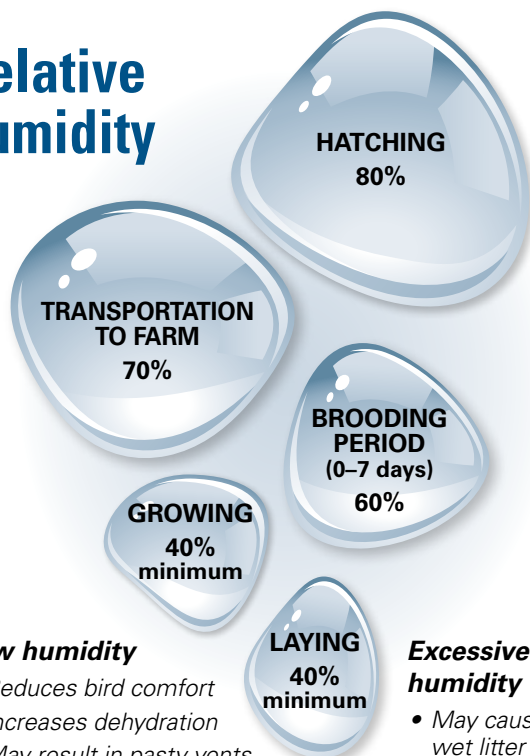
Chicks congregated in one part of cage, avoiding drafts, noise or uneven light distribution

Brooding Recommendations

- Brood chicks in groups from similar aged breeder flocks.
- Modify temperature as needed to meet chicks' comfort needs.
- Adjust brooding temperature according to relative humidity. Lower temperature should be used with higher relative humidity.
- Find optimum balance of temperature, humidity and ventilation rate for chick comfort.
- For every 5 percentage point increase above 60% relative humidity, reduce brooding temperatures by 1°C. (Example: for 65% relative humidity, reduce brooding temperature to 32°C).
- Pre-heat brooding houses prior to chick placement: 24 hours in normal climates, 48 hours in cool climates and 72 hours in cold climates.
- Establish proper house temperature of 32–35°C (air temperature measured at chick level) and 60% humidity 24 hours before chick placement.
- Bright light (30–50 lux) during 0–7 days helps chicks quickly find feed and water and adapt to the new environment.
- After the first week, reduce temperature weekly 2–3°C until reaching 21°C.

AGE	0–3 days	4–7 days	8–14 days	15–21 days	22–28 days	29–35 days	36–42 days
AIR TEMP. (CAGE)	32–33°C	30–32°C	28–30°C	26–28°C	23–26°C	21–23°C	21°C
AIR TEMP. (FLOOR)	33–35°C	30–32°C	29–31°C	27–29°C	24–27°C	22–24°C	21°C
LIGHT INTENSITY	30–50 lux	31–33°C	25 lux	25 lux	25 lux	5–15 lux	5–15 lux
LIGHT HOURS	22 hours or Intermittent Program	21 hours or Intermittent Program	20 hours	19 hours	18 hours	17 hours	16 hours

Relative humidity





Low humidity

- Reduces bird comfort
- Increases dehydration
- May result in pasty vents in chicks
- May increase agitation and possibility of pecking
- Adversely affects feather cover
- Increases dust

Excessive humidity

- May cause wet litter
- Increases ammonia
- Causes poor air quality

CROP FILL – ARE THE CHICKS EATING?

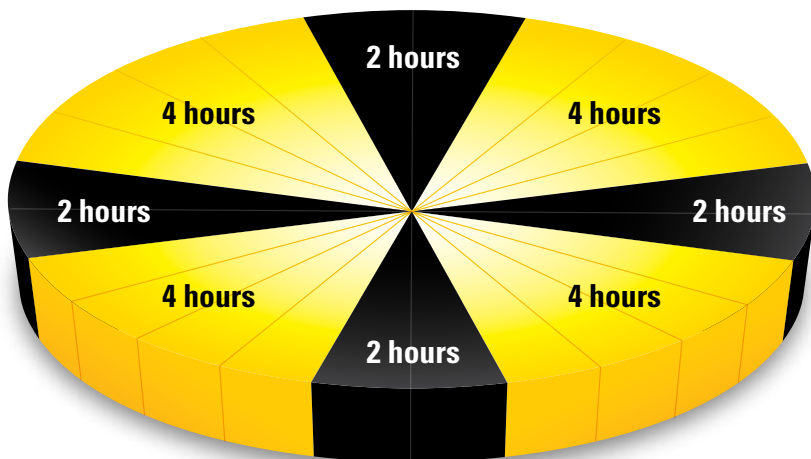
Hours after chick placement	Chicks with feed in crop		
6	75%		
12	85%		
24	100%	Chick with starter feed in crop	Chick without starter feed in crop

Brooding temperatures that are too low or too high will decrease the percentage of chicks with crop fill.

Lighting During Brooding Period

- An intermittent lighting program is preferred. Alternatively, chicks should have 22 hours of light / 2 hours of dark for days 0–3 and 21 hours of light / 3 hours of dark for days 4–7 to help chicks find feed and water.
- Do not use 24 hours of light.
- Bright light (30–50 lux) during 0–7 days helps chicks quickly find feed and water and adapt to the new environment.
- After the first week, begin slow step-down lighting program (see Light Program for Light-Controlled Housing).

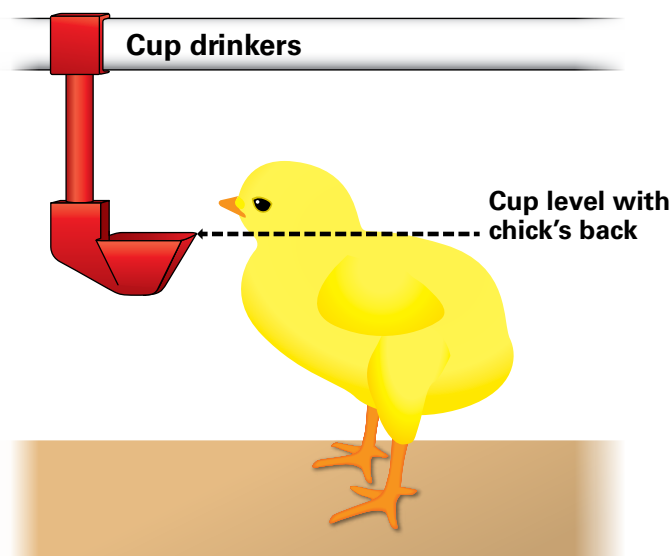
INTERMITTENT LIGHTING PROGRAM



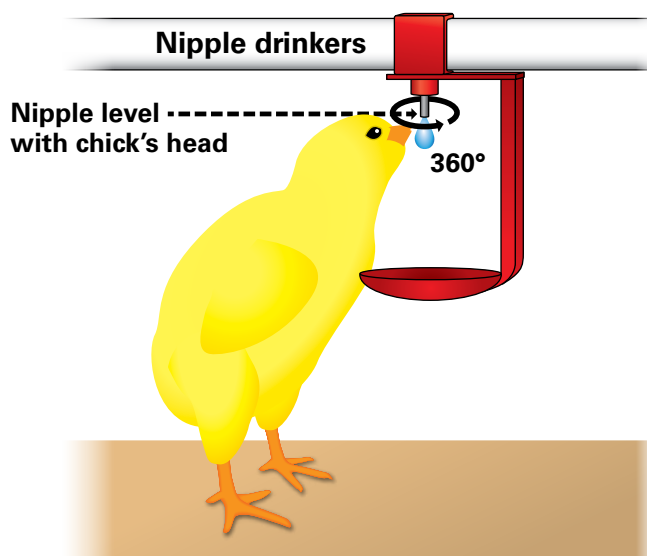
- Preferred lighting technique
- Use from 0–7 days
- Intermittent dark periods provide rest periods for chicks
- Synchronizes chicks' activities and feedings
- Establishes more natural behavior of rest and activity
- May improve 7 day livability and pullet body weight
- May improve antibody response from vaccinations
- Some dark periods may be shortened or removed to accommodate work schedules

Drinking Systems

- Drinking water should be tested for quality and cleanliness from source and end of the water line.
- Flush water lines prior to chick arrival.
- Flush water lines weekly during growing and production periods.
- Do not give cold water to chicks. Be careful when flushing water lines for chicks. Allow water time to warm up in the house so chicks are comfortable drinking.
- Nipple drinkers should deliver minimum 30 ml per minute / nipple in pullets and 60 ml per minute / nipple in layers.



- Cup drinkers should be manually filled during 0–3 days to train chicks to drink.
- Open drinkers (bell, plassion, supplemental chick drinkers, trough) are easily contaminated and should be cleaned daily.



- Adjust nipple water system pressure to create hanging drop to help chicks find water for 0–3 days and in layer house at transfer.
- Splash cups are useful during brooding period and in hot climates.
- 360° activated nipples make drinking easy for chicks.
- Use only 360° activated nipples for hatchery beak-treated chicks, as well as supplemental chick drinkers.

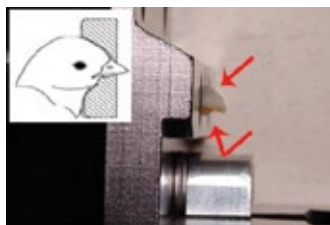
Beak Treatment / Trimming

(Check local regulations concerning use of beak trimming)

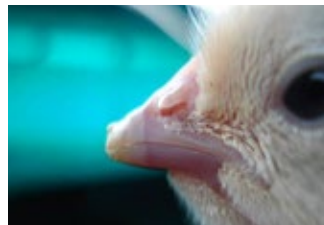
- Hy-Line W-36 commercial layer is most successfully beak trimmed at hatch by infrared beak treatment or between 7–10 days of age by precision beak trimming.
- If necessary, re-trim at 6 weeks or 12–14 weeks of age.
- In light-controlled housing, one beak trim should be sufficient.
- Hatchery beak treatment or beak trimming reduces feed wastage and leaves the beak less damaging to other birds.

HATCHERY INFRARED BEAK TREATMENT

- This provides efficient, uniform beak treatment.
- Beak remains intact until 10–14 days of age when treated portion separates.
- Use only 360° activated nipples for beak-treated chicks, as well as supplemental chick drinkers.
- For beak-treated chicks, feed on paper for 0–7 days.



Infrared beak treatment can be modified according to local conditions.



Immediately following infrared beak treatment on day of hatch



7 days after infrared beak treatment

PRECISION BEAK TRIMMING

- Cauterize beak for 2 seconds.
 - When cauterizing blade is not hot enough or cauterization time is < 2 seconds, beak will continue to grow unevenly.
 - If cauterizing blade is too hot or cauterization time is > 2 seconds, sensitive neuromas may form.
- Use a pyrometer to measure blade temperature, which should be approximately 650°C.
- Cauterizing blade color may be used as an approximate indicator of temperature.



Photo courtesy of Lyon Technologies, Inc.



Pyrometer indicating proper blade temperature of 650°C.

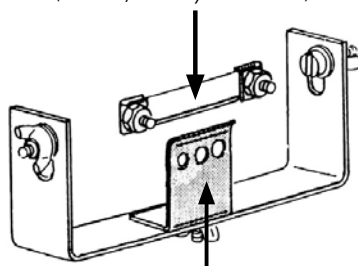
< 650°C

650°C

> 650°C

- Blade temperature variation of up to 40°C is common due to external influences and cannot be detected by the human eye.
- Use a template with guide plate holes for precision beak trim of different size chicks.
- Check that beaks have been properly and evenly trimmed.

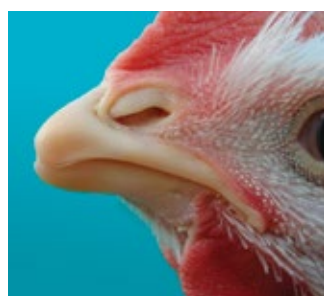
*Cauterizing blade
(650°C, cherry red color)*



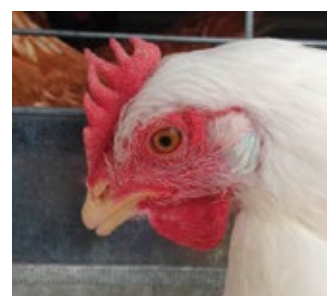
*Template with
guide holes*

**Guide holes
correspond to
different size
and age of
chicks**

- 3.56 mm
- 4.00 mm
- 4.37 mm



Properly trimmed beaks

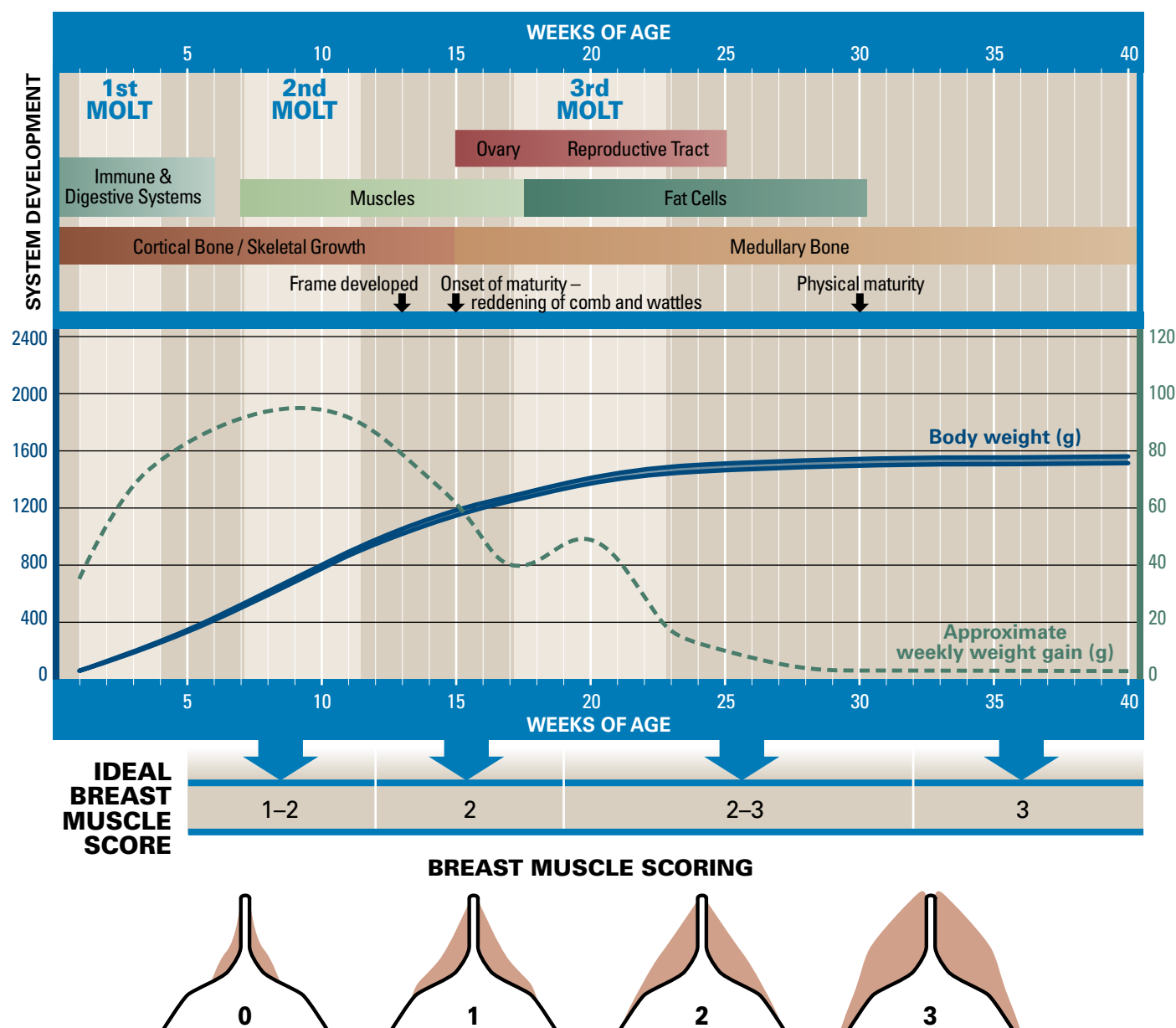


Precautions when beak trimming birds:

- Do not beak-trim sick birds.
- Do not hurry.
- Provide vitamins and electrolytes containing vitamin K in drinking water 2 days before and 2 days after beak trimming.
- Watch chicks during beak trimming to assess stress. Raise ambient temperature until birds appear comfortable and active.
- Keep feed at the highest level for several days after beak trimming.
- Use only well-trained crews.
- Use 360° activated nipples.
- Handle chicks carefully.

Growth and Development

- Focus on pullet rearing programs to optimize growth and development.
- A pullet flock entering into egg production at the correct body weight (1.26–1.30 kg) with uniformity higher than 90% performs best in the production period.
- It is important to achieve 6, 12, 18, 24, and 30 week body weight targets to ensure optimum development of the bird's body.
- If possible, exceed pullet body weight standards throughout growth.
- Change growing diets only when recommended body weight is attained. Suggested ages are a guide if target weights are achieved.
- Delay diet change if birds are underweight or have poor diet uniformity.
- Anticipate rapid rise in ambient temperature and adjust bird's diet accordingly. Birds will eat less when exposed to a rapid temperature increase.
- Stress periods require a change in diet formulation to ensure proper nutrient intake.



Layers with good muscle development are better able to sustain high egg production

Growing Body Weights, Feed Consumption and Uniformity

AGE (weeks)	BODY WEIGHT (g)	FEED INTAKE (g / bird per day)	UNIFORMITY (Cage)
1	61 – 69	14 – 15	>85%
2	112 – 118	14 – 18	
3	176 – 184	18 – 20	
4	245 – 255	29 – 31	>80%
5	324 – 336	38 – 40	
6	413 – 427	41 – 43	
7	502 – 518	42 – 44	
8	591 – 609	45 – 47	
9	680 – 700	46 – 50	
10	779 – 801	49 – 53	
11	868 – 892	51 – 55	
12	947 – 973	52 – 56	>85%
13	1016 – 1044	54 – 58	
14	1085 – 1115	55 – 59	
15	1154 – 1186	57 – 61	
16	1193 – 1227	59 – 63	
17	1232 – 1268	60 – 64	>90%



Weigh birds separately after 3 weeks using a digital scale that calculates uniformity.

- Body weight gains and uniformity may be negatively affected by bird handling, vaccination and transfer.
- Using multiple hatch dates, causing a range of chick ages, will negatively affect uniformity.
- Flocks should be at 90% uniformity at the time of transfer to the laying facility.

Space Guidelines *(check local regulations)*

		WEEKS OF AGE																									
		3								17				20		30		40		50		60		70		80	
CONVENTIONAL AND COLONY CAGES																											
Floor Space																											
100–200 cm ² (50–100 birds / m ²)		310 cm ² (32 birds / m ²)								490 cm ² (20 birds / m ²) – 750 cm ² (13 birds / m ²)																	
Nipple																											
1 / 12 birds		1 / 8 birds								1 / 12 birds or access to 2 drinkers																	
Feeders																											
5 cm / bird		8 cm / bird								7–12 cm / bird																	

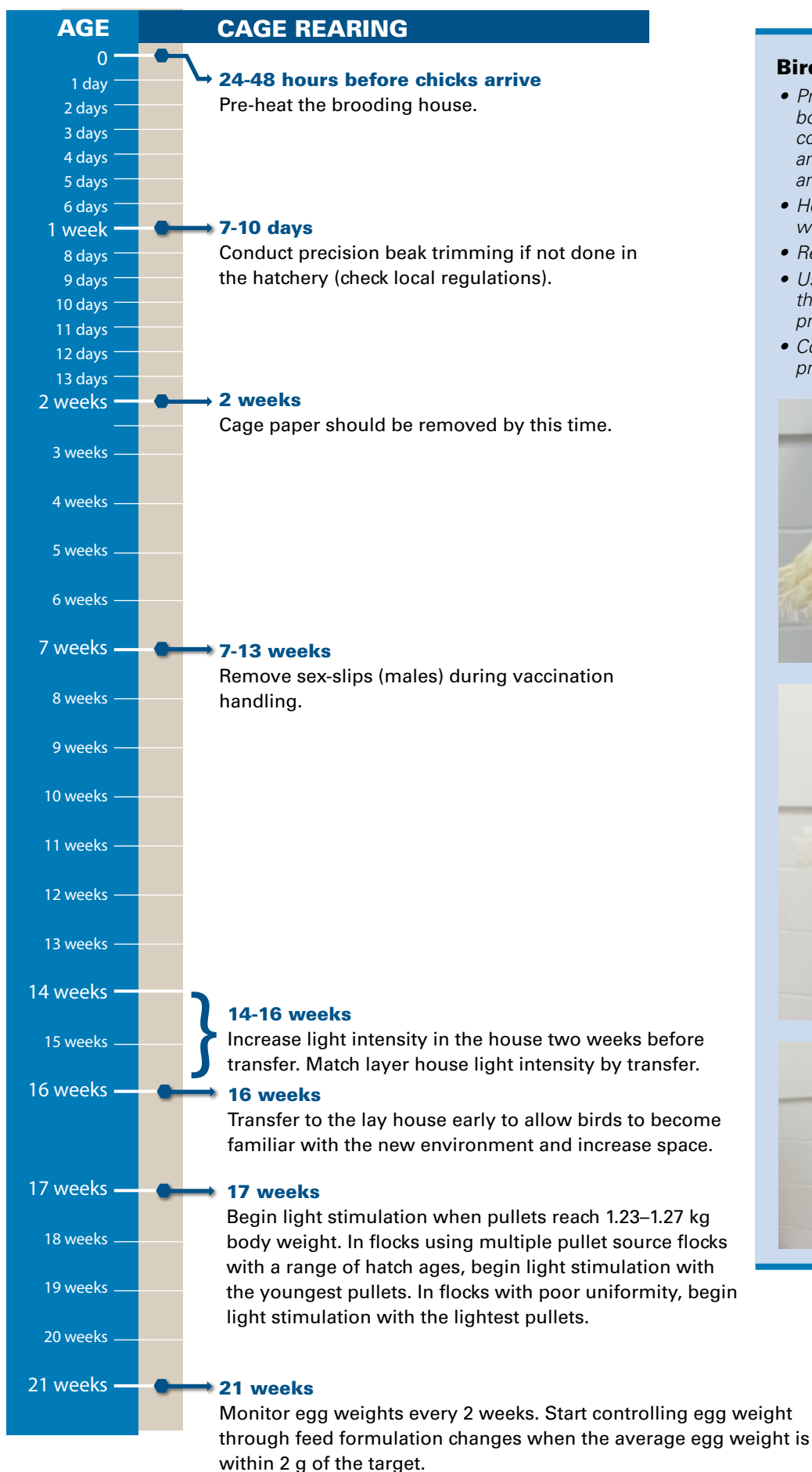
Requirements vary with type of equipment used and environmental conditions.

Cage Systems Management

- The flock can be moved into the production facility at 15–16 weeks of age or after administration of the last live vaccines.
- It is important that growing and production cages use similar feed and water systems.
- Any sex slips (males) should be removed around 7 weeks and at transfer.
- Supportive care to reduce stress, such as water-soluble vitamins, probiotics, vitamin C and increased dietary density, should be used 3 days before and 3 days after transfer.
- Weigh prior to a scheduled feed change.
- Remove mortality daily.
- If mortality exceeds 0.1% per week, perform necropsies and other diagnostics to determine cause(s) of mortality.



Management Events for Commercial Layers

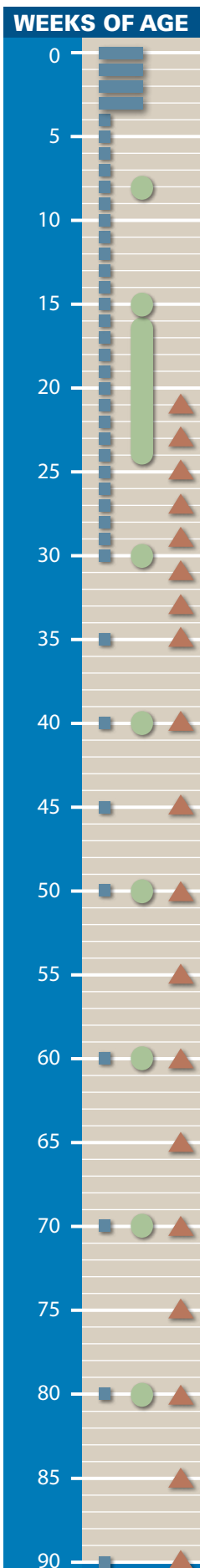


Bird Handling—BE GENTLE

- Proper handling of birds during body weight measurements, blood collection, selection, vaccination, and transfer will reduce bird stress and prevent injuries.
- Hold birds by both legs or both wings.
- Return birds to cage or floor gently.
- Use experienced personnel that have been trained in proper procedures of bird handling.
- Continually observe crews for proper handling.



Management Events for Commercial Layers



AGES OF BODY WEIGHT MEASUREMENTS

- Weigh separate groups of birds on each cage level due to temperature and environmental differences.
- Identify cages from the beginning and end of feed lines.
- Mark cages and use the same cage every time body weight is monitored.

0–3 weeks

- Bulk weigh 10 boxes of 10 chicks.

4–29 weeks

- Weigh 100 birds individually every week.
- Weigh birds in the same cages each time for best accuracy.
- Calculate uniformity.

30–50 weeks

- Weigh 100 birds individually every 5 weeks.
- Weigh birds in the same cages each time for best accuracy.
- Calculate uniformity.

Over 50 weeks

- Weigh 100 birds individually every 10 weeks.
- Weigh birds in the same cages each time for best accuracy.
- Calculate uniformity.

When handling birds for body weights, assess:

- Keel bone—straightness and firmness
- Breast muscle score
- Body fat
- External parasites
- Clinical symptoms of disease

CALCULATING UNIFORMITY

- Use individual bird weights.
- Uniformity calculation tool is available at www.hylinebodyweight.com.

AGES OF BLOOD COLLECTION

For more information, see the “Proper Collection and Handling of Diagnostic Samples” technical update at www.hyline.com.

Collect 10–20 sera samples per flock for titer determination.

8 weeks

- Assess early vaccination technique and disease exposure.

15 weeks

- Collect blood before transfer to lay house to assess possible change in disease exposure.
- It is common to not send sera to the laboratory and freeze for future analysis in event of disease outbreak on lay farm.

16–24 weeks

- Collect blood at least 4 weeks after final inactivated vaccination to measure post-vaccination antibody response.
- It is useful to assess disease challenge after transfer to lay farm.

AGES TO MONITOR EGG WEIGHTS

Weigh 100 eggs collected from egg belts in front of randomly selected cages (may be the same cages used for body weight monitoring) to ensure even distribution of egg samples. Monitor egg weights on a specific day of the week within the same 3-hour time frame.

Good Lighting Practices

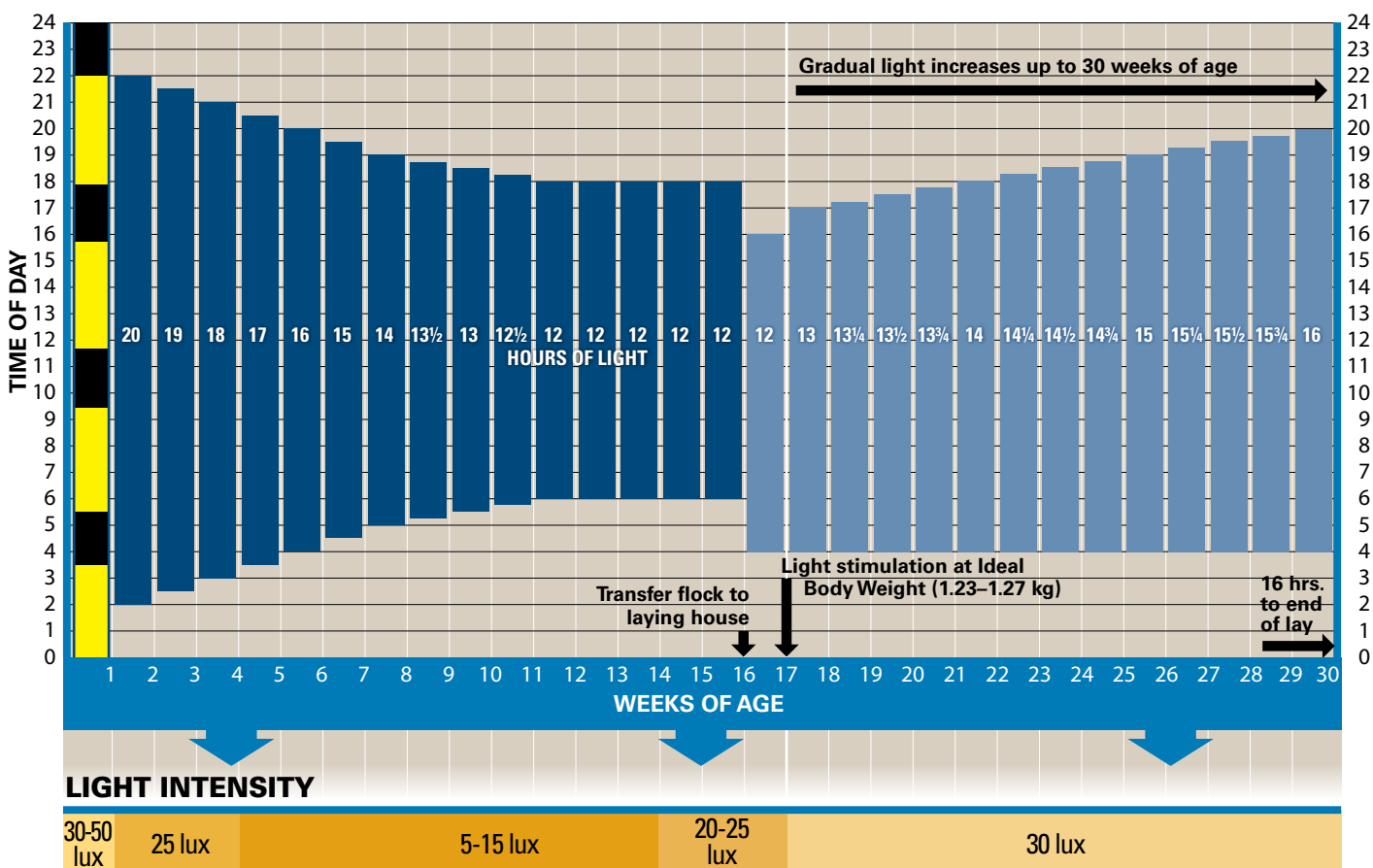
- In cage housing, measure minimum light intensity at feeder on bottom tier cages, mid-way between lights.
- Keep light bulbs clean to prevent loss of light intensity.
- Prevent dark areas caused by too much distance between lights or burned-out light bulbs.
- Shiny or white surfaces reflect light and increase light intensity.
- Take local conditions into account which may require adaptations of lighting programs.
- Light hours of growing and production houses should be matched at transfer.
- Light intensity should increase 2 weeks before flock is transferred to the laying house (but not prior to 14 weeks of age).
- Light stimulation period should extend into the peaking period (achieve 16 hours of light at approximately 30 weeks).

Light Program for Light-Controlled Housing

(www.hylineweblighting.com)

The W-36 hen requires a slow step-down of light hours from 0–12 weeks to encourage:

- Feed intake during grow to optimize growth and development
- Good body weight uniformity
- Persistency of egg production
- Production of larger eggs
- Prevention of too-early egg production



- "Lights on" time can be varied between houses in laying flocks to facilitate egg collection on multiple flock complexes.
- If the laying flock has a large spread in hatch ages and/or poor uniformity, light stimulate the flock based on the youngest hatch date or lightest birds.
- Use warm lights (2700–3500 K) in laying flocks to ensure sufficient red spectrum light.

Customized Lighting Programs for Open-Sided Housing (www.hylineweblighting.com)

The Hy-Line International Lighting Program can create custom lighting programs for your location. To prevent early sexual development, the program finds the longest natural day length between 13–17 weeks of age and constructs an artificial lighting program that holds day length constant with artificial lights from 13–17 weeks.

- On the first screen—enter e-mail address and select language.
- On the second screen, use dropdowns for “Select Location of Flock,” “Hatch Date,” “Variety Standards” and “Housing Style.”
- Click on “Create Lighting Spreadsheet.”
- Results will be e-mailed to you.

Lighting Program for : IOWA / DALLAS CENTER 93° 56' W 41° 43' N

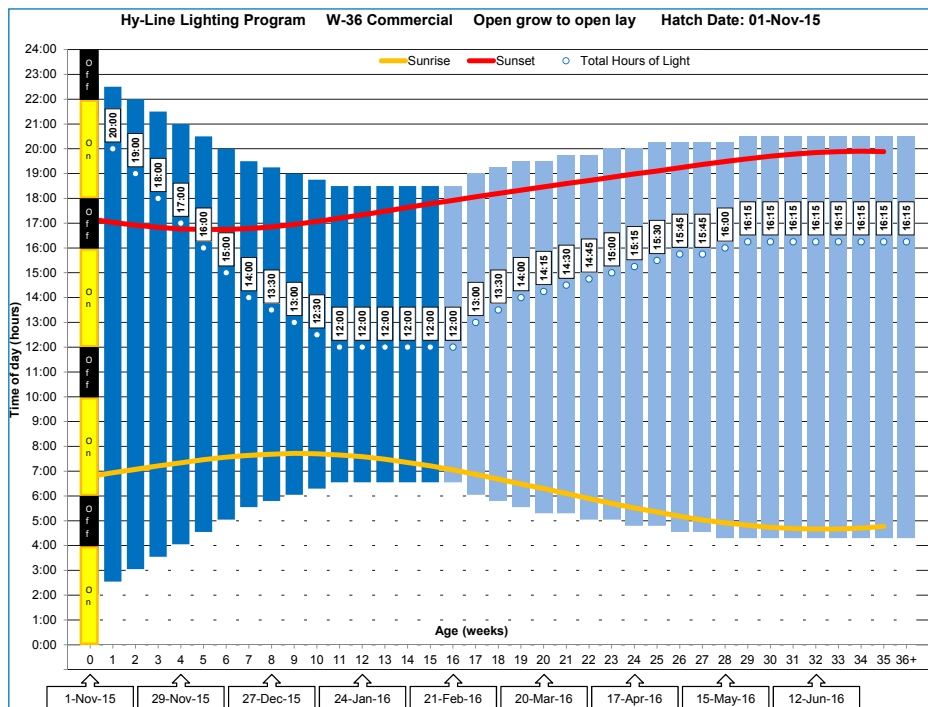
Variety: W-36 Commercial
House Type: Open grow to open lay
Hatch Date: 01-Nov-15 Standard daylight time

* Age to stepdown to from week 1 : 12
* Hours of constant light in grow after step-down : 12
* Hours of constant light in lay after step-up : 16

Weeks of Age	Date	Sunrise	Lights on	Lights Off	Sunset	Total Hours of Light	Total Sunlight
0	1-Nov-15	6:47	2:00	23:00	17:10	21:00	10:23
1	8-Nov-15	6:56	2:30	22:30	17:02	20:00	10:06
2	15-Nov-15	7:04	3:00	22:00	16:55	19:00	9:51
3	22-Nov-15	7:13	3:30	21:30	16:50	18:00	9:37
4	29-Nov-15	7:20	4:00	21:00	16:46	17:00	9:26
5	6-Dec-15	7:28	4:30	20:30	16:45	16:00	9:17
6	13-Dec-15	7:34	5:00	20:00	16:45	15:00	9:11
7	20-Dec-15	7:38	5:30	19:30	16:47	14:00	9:09
8	27-Dec-15	7:41	5:45	19:15	16:51	13:30	9:10
9	3-Jan-16	7:43	6:00	19:00	16:57	13:00	9:14
10	10-Jan-16	7:42	6:15	18:45	17:04	12:30	9:22
11	17-Jan-16	7:39	6:30	18:30	17:12	12:00	9:33
12	24-Jan-16	7:35	6:30	18:30	17:20	12:00	9:45
13	31-Jan-16	7:29	6:30	18:30	17:29	12:00	10:00
14	7-Feb-16	7:21	6:30	18:30	17:38	12:00	10:17
15	14-Feb-16	7:13	6:30	18:30	17:47	12:00	10:34
16	21-Feb-16	7:03	6:30	18:30	17:55	12:00	10:52
17	28-Feb-16	6:52	6:00	19:00	18:04	13:00	11:12
18	6-Mar-16	6:41	5:45	19:15	18:12	13:30	11:31
19	13-Mar-16	6:29	5:30	19:30	18:20	14:00	11:51
20	20-Mar-16	6:18	5:15	19:30	18:28	14:15	12:10
21	27-Mar-16	6:06	5:15	19:45	18:36	14:30	12:30
22	3-Apr-16	5:54	5:00	19:45	18:43	14:45	12:49
23	10-Apr-16	5:42	5:00	20:00	18:51	15:00	13:09
24	17-Apr-16	5:31	4:45	20:00	18:59	15:15	13:28
25	24-Apr-16	5:21	4:45	20:15	19:06	15:30	13:45
26	1-May-16	5:11	4:30	20:15	19:14	15:45	14:03
27	8-May-16	5:02	4:30	20:15	19:22	15:45	14:20
28	15-May-16	4:55	4:15	20:15	19:29	16:00	14:34
29	22-May-16	4:49	4:15	20:30	19:36	16:15	14:47
30	29-May-16	4:44	4:15	20:30	19:42	16:15	14:58
31	5-Jun-16	4:41	4:15	20:30	19:47	16:15	15:06
32	12-Jun-16	4:40	4:15	20:30	19:51	16:15	15:11
33	19-Jun-16	4:40	4:15	20:30	19:53	16:15	15:13
34	26-Jun-16	4:42	4:15	20:30	19:54	16:15	15:12
35	3-Jul-16	4:46	4:15	20:30	19:53	16:15	15:07
36+			4:15	20:30		16:15	

This lighting program is created from a formula based on global location and housing style. This program may need to be further adapted to better fit local conditions. Please email info@hyline.com for further questions or technical assistance.

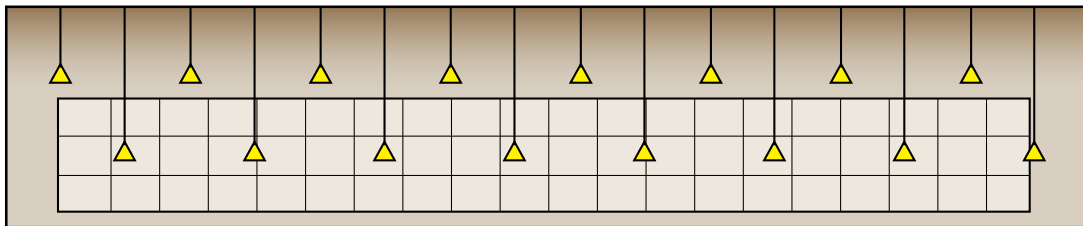
Same lighting program with sunrise and sunset represented by yellow and red lines and suggested artificial day length indicated by blue bars



Lighting Considerations

CAGES

- Alternating the height of lights improves light distribution to all cage levels.
- Position lights to minimize bright and dark areas in the house.



Use of Shades in Open-Sided Housing



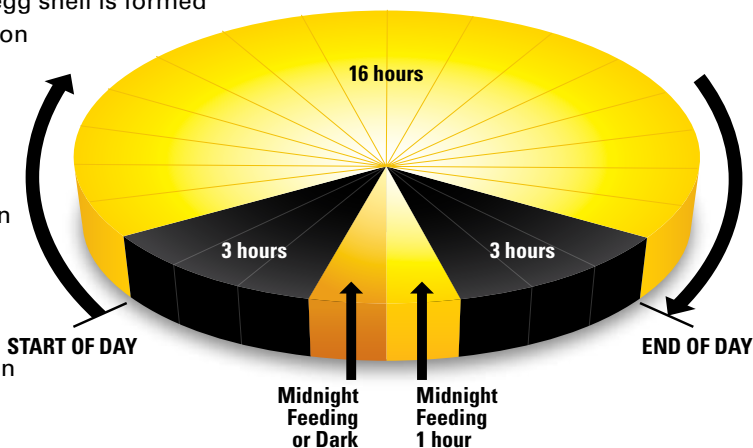
- Shades are an effective way to decrease light intensity in an open-sided house.
- Keep shades clean and free of dust to allow air flow.
- Use stir fans when using shades.
- Avoid direct sunlight on birds by using shades or roof overhangs.
- Black shades are preferred.

Midnight Feeding / Lighting Program

- Optional lighting technique that promotes greater feed consumption
- Used whenever more feed intake is desired in growing or laying flocks
- Increases calcium absorption during night when most egg shell is formed
- Useful to increase feed intake during peak egg production
- Helps maintain feed consumption in hot climates
- Midnight feeding may increase feed intake 2–5 g / day per bird

Good Practices

- Initiate the program by turning lights on for 1–2 hours in the middle of the dark period.
- Fill feeders before lights are turned on.
- There must be at least 3 hours of dark before and after the midnight feeding.
- Light provided during the midnight feeding is in addition to regular day length (i.e. 16 hours + midnight feeding).
- If midnight feeding is removed, reduce light gradually at a rate of 15 minutes per week.



Water Quality

- Water is the most important nutrient. Good quality water must be available to birds at all times.
- Water and feed consumption are directly related—when birds drink less, they consume less feed and production quickly declines.
- As a general rule, healthy birds will consume 1.5–2.0 times more water than feed. This ratio increases in high ambient temperatures.
- Test water quality at least 1 time per year. The water source will determine the regularity of water testing.
 - Surface water requires more frequent testing, as it is more affected by season and rainfall patterns.
 - Closed wells taking water from aquifers or deep artesian basins will be more consistent in water quality, but are generally higher in dissolved mineral content.
- The presence of coliform bacteria is an indicator that the water source has been contaminated with animal or human waste.
- When collecting a well water sample, let the water run for 2 minutes prior to collecting the sample. Water samples should be kept below 10°C and submitted to the lab in less than 24 hours.
- Some water sources contain high levels of dissolved minerals such as calcium, sodium and magnesium. When this occurs, amounts of these minerals in water have to be considered when formulating feed.
- Ideal water pH is 5–7 to promote good water sanitation, increase feed consumption and improve upper gastrointestinal health.
- Less than optimum water quality can have a significant impact on gut health, which will lead to under utilization of nutrients in feed.

ITEM	MAXIMUM CONCENTRATION (ppm or mg/L)*	
Nitrate NO_3^- ¹	25	Older birds will tolerate higher levels up to 20 ppm. Stressed or diseased challenged birds may be more sensitive to effects of Nitrate.
Nitrate Nitrogen ($\text{NO}_3\text{-N}$) ¹	6	
Nitrite NO_2^- ¹	4	Nitrite is considerably more toxic than Nitrate, especially for young birds where 1 ppm Nitrite may be considered toxic.
Nitrite Nitrogen ($\text{NO}_2\text{-N}$) ¹	1	
Total dissolved solids ²	1000	Levels up to 3000 ppm may not affect performance but could increase manure moisture.
Chloride (Cl^-) ¹	250	Levels as low as 14 mg may be problematic if sodium is higher than 50 ppm.
Sulfate (SO_4^{2-}) ¹	250	Higher levels may be laxative.
Iron (Fe) ¹	<0.3	Higher levels result in bad odor and taste.
Magnesium (Mg) ¹	125	Higher levels may be laxative. Levels above 50 ppm may be problematic if sulphate levels are high.
Potassium (K) ²	20	Higher levels may be acceptable depending on sodium level, alkalinity and pH.
Sodium (Na) ^{1,2}	50	Higher concentration is acceptable but concentrations above 50 ppm should be avoided if high levels of chloride, sulphate or potassium exist.
Manganese (Mn) ³	0.05	Higher levels may be laxative.
Arsenic (As) ²	0.5	
Fluoride (F^-) ²	2	
Aluminum (Al) ²	5	
Boron (B) ²	5	
Cadmium (Cd) ²	0.02	
Cobalt (Co) ²	1	
Copper (Cu) ¹	0.6	Higher levels result in bitter taste.
Lead (Pb) ¹	0.02	Higher levels are toxic.
Mercury (Hg) ²	0.003	Higher levels are toxic.
Zinc (Zn) ¹	1.5	Higher levels are toxic.
pH ¹	6.3–7.5	Birds may adapt to lower pH. Below pH 5 may reduce water intake and corrode metal fittings. Above pH 8 may reduce intake and reduce effectiveness of water sanitation.
Total bacteria counts ³	1000 CFU/ml	Likely to indicate dirty water.
Total Coliform bacteria ³	50 CFU/ml	
Fecal Coliform bacteria ³	0 CFU/ml	
Oxygen Reduction Potential (ORP) ³	650–750 mEq	The ORP range at which 2–4 ppm of free chlorine will effectively sanitize water at a favorable pH range of 5–7.

*Limits may be lower as interactions exist between magnesium and sulphate; and between sodium, potassium, chloride and sulphate.

¹ Carter & Sneed, 1996. Drinking Water Quality for Poultry, Poultry Science and Technology Guide, North Carolina State University Poultry Extension Service. Guide no. 42

² Marx and Jaikaran, 2007. Water Analysis Interpretation. Agri-Facts, Alberta Ag-Info Centre. Refer to <http://www.agric.gov.ab.ca/app84/rwqit> for online Water Analysis Tool

³ Watkins, 2008. Water: Identifying and Correcting Challenges. Avian Advice 10(3): 10-15 University of Arkansas Cooperative Extension Service, Fayetteville

Water Consumption

Water Consumed / 100 Birds per Day

AGE IN WEEKS	LITERS
1–3	0.8–2.7
4–6	2.5–5.7
7–9	5.7–9.5
10–15	6.8–10.2
16–20	7.2–15.2
21–25	9.9–18.2
25+	15.2–20.8

The chart shows an expected range of water consumption at normal environmental temperatures of 21–27°C. As the environmental temperature increases above this range, water consumption may increase up to double the amounts shown.



Air Quality

Air Movement (m³ / hour per 1000 birds)

AMBIENT TEMPERATURE (°C)	WEEKS OF AGE					
	1	3	6	12	18	19+
32	340	510	1020	2550	5950	4650–9350
21	170	255	510	1275	2550	4250–5100
10	120	170	340	680	1870	2550–3400
0	70	130	230	465	1260	850–1300
-12	70	100	170	340	500	600–850
-23	70	100	170	340	500	600–680

Acknowledgment: Dr. Hongwei Xin, Professor, Department of Agriculture and Biosystems Engineering and Department of Animal Science, Iowa State University, Ames, Iowa, USA

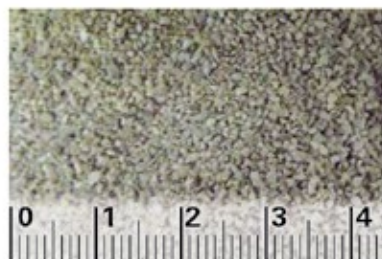
- Production house should be 18–25°C and 40–60% humidity.
- The general rule for determining required fan capacity—4 m³ of air movement / kilogram of body weight per hour.
- Ventilation is essential to:
 - Provide each bird with adequate supply of oxygen
 - Remove moisture from house
 - Remove carbon dioxide produced by birds
 - Remove dust particles
 - Dilute aerosolized pathogenic organisms

Calcium Particle Size

PARTICLE SIZE	STARTER, GROWER, DEVELOPER	PRE-LAY*	WEEKS 17–37	WEEKS 38–48	WEEKS 49–62	WEEKS 63+
Fine (0–2 mm)	100%	50%	50%	45%	40%	35%
Coarse (2–4 mm)	–	50%	50%	55%	60%	65%

* When limestone solubility or purity is less than desired, coarse limestone (2–4 mm) can be eliminated from the Pre-Lay Diet.

- The appropriate particle size depends on the solubility of limestone.
- Dietary calcium levels may need to be adjusted based on limestone solubility.
- Limestone dark in color is geologically older, containing more impurities and is generally lower in solubility and calcium availability.



Fine calcium (0–2 mm)



Coarse calcium (2–4 mm)

Photos courtesy of Longcliff Quarries Ltd.

Feed Particle Size

A sieve shaker separates feed sample into categories based on particle size.

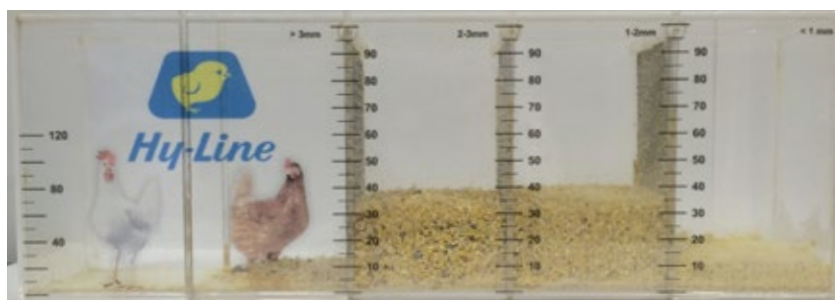
- Use on the farm to check feed particle size from the feed mill—sample taken on delivery or from feed bins.
- Use to assess the uniformity of feed particle size throughout the feeding system—samples are taken from various points.

Too many fine feed particles:

- Feed intake and nutrient absorption decreases
- Dust in house increases

Too many coarse feed particles:

- Birds selectively eat large particles
- Risk of feed separation increases



Hy-Line Sieve Shaker

OPTIMAL FEED PARTICLE PROFILE

PARTICLE SIZE	STARTER	GROWER	DEVELOPER	PRODUCTION
< 1 mm	—	25%	25%	25%
1–2 mm	Crumble	65%	35%	35%
2–3 mm	—	10%	35%	35%
> 3 mm	—	—	5%	5%

Best Practices

- A 3–4 hour gap between mid-day feedings allows birds to consume fine particles.
- Add a minimum of 0.5% liquid oil/fat in meal diets to incorporate and retain small particles in feed.
- Use larger particle size meal or crumble to increase intakes in hot climates.

Vitamins and Trace Minerals

- As the vitamin / trace mineral premix is often found in fine feed particles, a minimum level of 0.5% added liquid oil / fat in meal diets binds small particles in feed.
- Manage feeders to allow birds to consume fine particles during mid-day.

ITEM ^{1,2,3,4}	IN 1000 KG COMPLETE DIET	
	Growing Period	Laying Period
Vitamin A, IU	10,000,000	8,000,000
Vitamin D ₃ ⁵ , IU	3,300,000	3,300,000
Vitamin E, g	25	20
Vitamin K (menadione), g	3.5	2.5
Thiamin (B ₁), g	2.2	2.5
Riboflavin (B ₂), g	6.6	5.5
Niacin (B ₃) ⁶ , g	40	30
Pantothenic acid (B ₅), g	10	8
Pyridoxine (B ₆), g	4.5	4
Biotin (B ₇), mg	100	75
Folic acid (B ₉), g	1	0.9
Cobalamine (B ₁₂), mg	23	23
Choline ⁷ , g	110	110
Manganese ⁸ , g	90	90
Zinc ⁸ , g	85	80
Iron ⁸ , g	30	40
Copper ⁸ , g	15	8
Iodine, g	1.5	1.2
Selenium ⁸ , g	0.25	0.22

¹ Minimum recommendations for growing and laying periods. Local regulations may limit dietary content of individual vitamins or minerals.

² Store premixes according to supplier's recommendations and observe 'use by' dates to ensure vitamin activity is maintained. Inclusion of antioxidant may improve premix stability.

³ Vitamin and mineral recommendations vary according to activity.

⁴ Where heat treatment is applied to diet, higher levels of vitamins may be required. Consult with vitamin supplier regarding stability through individual production processes.

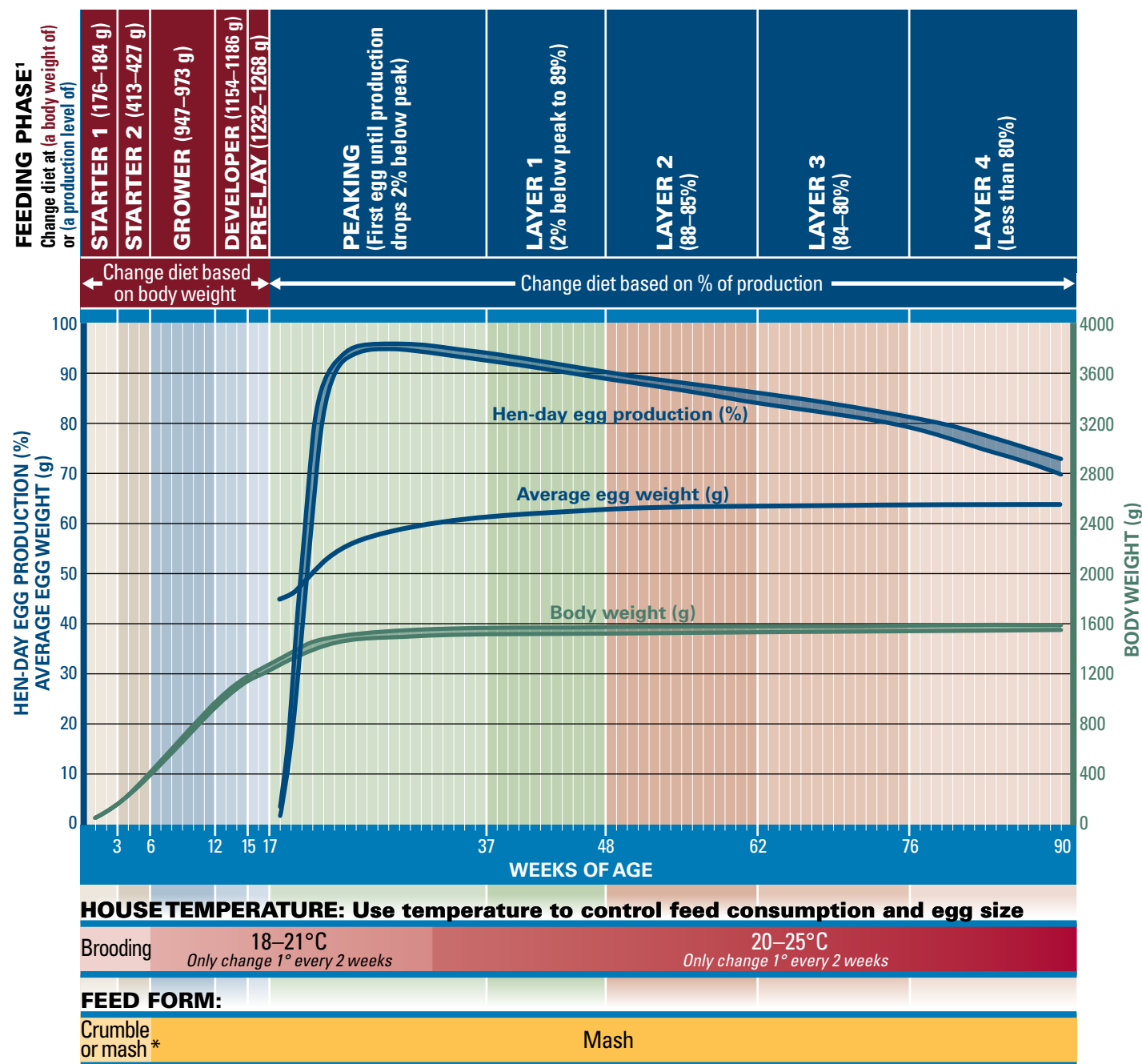
⁵ A proportion of Vitamin D₃ can be supplemented as 25-hydroxy D₃ according to supplier's recommendations and applicable limits.

⁶ Higher levels of Niacin are recommended in non-cage systems.

⁷ Inclusion may require adjustment when other dietary sources are considered.

⁸ Greater bioavailability and productivity may be possible with use of chelated mineral sources.

Phase Feeding to Meet the Hen's Nutritional Needs



* Crumble may be fed longer to encourage body weight gain

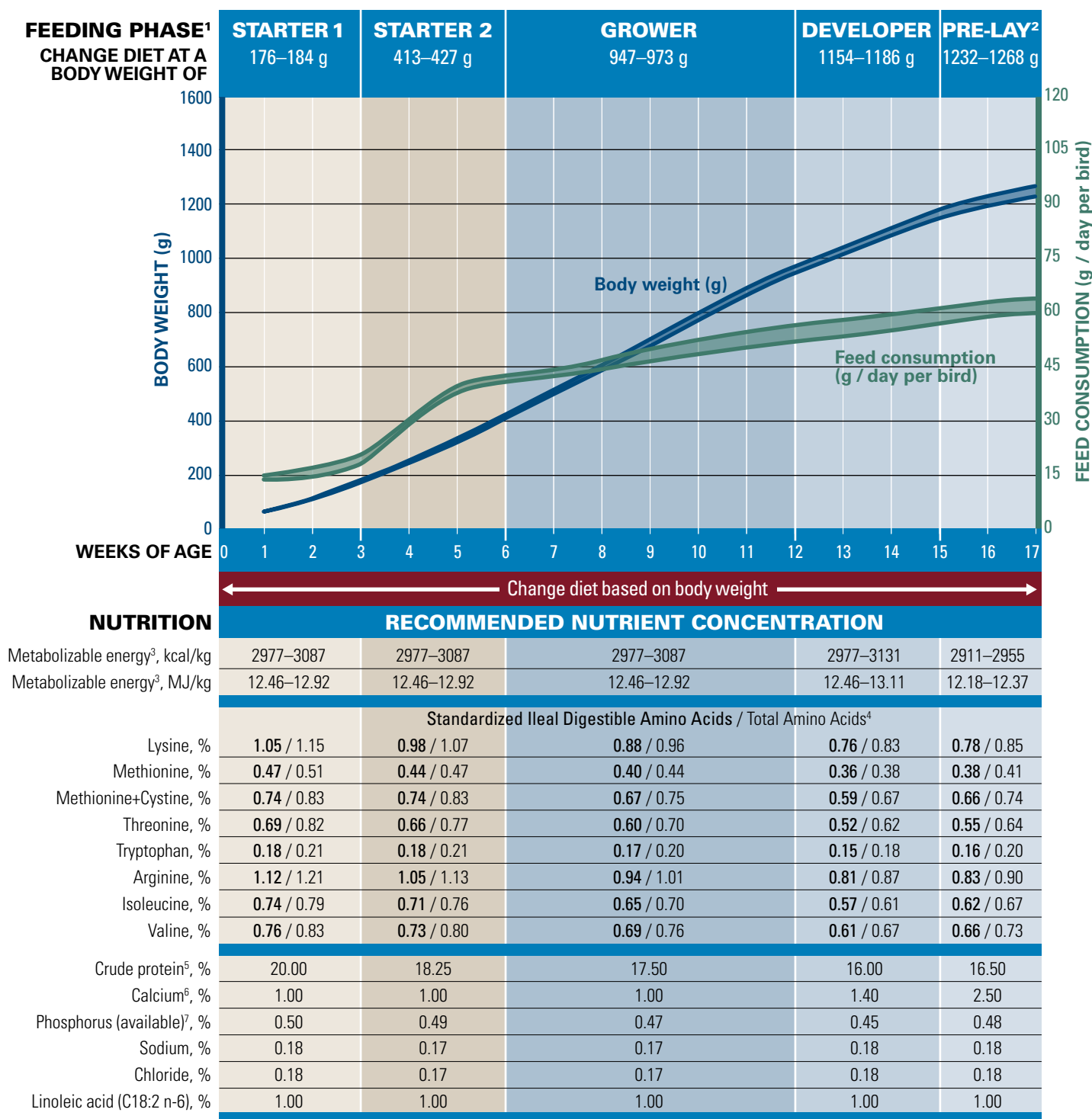
Controlling Egg Weight

- Closely monitor egg weight of each flock and make nutritional changes as needed to ensure optimal egg weight.
- If smaller eggs are desired, egg weight should be controlled at an early age.
- Egg-weight control is achieved by limiting amino acid consumption and ensuring that feed intake is not too high (achieved through control of ambient temperature).
- Monitor egg weight every 2 weeks until 35 weeks of age, then every 5 weeks. Start controlling egg weight when average egg weight is within 2 g of target.

Control of Ambient House Temperature

- At housing, an ambient temperature of 18–20°C is desired. Increase house temperature about 1°C every 2 weeks until reaching 25°C, assuming ventilation systems are able to maintain adequate air quality at these temperatures.
- Lower (colder) house temperatures will lead to greater feed intakes and may be counterproductive to egg-weight control, as well as optimal feed efficiency and adult hen body weights.
- Place temperature sensors to measure temperature inside of cage. The temperature in walkways is significantly colder than the temperature inside cages, especially in stack deck belted house systems.

Growing Period Nutritional Recommendations



¹ Body weights are approximate. Refer to table on page 7.

² Do not feed Pre-Lay Diet earlier than 15 weeks of age. Do not feed Pre-Lay later than first egg as it contains insufficient calcium to support egg production.

³ Recommended energy range is based on raw material energy values shown in feed ingredient table at back of this guide. It is important that target concentrations of dietary energy are adjusted according to energy system applied to raw material matrix.

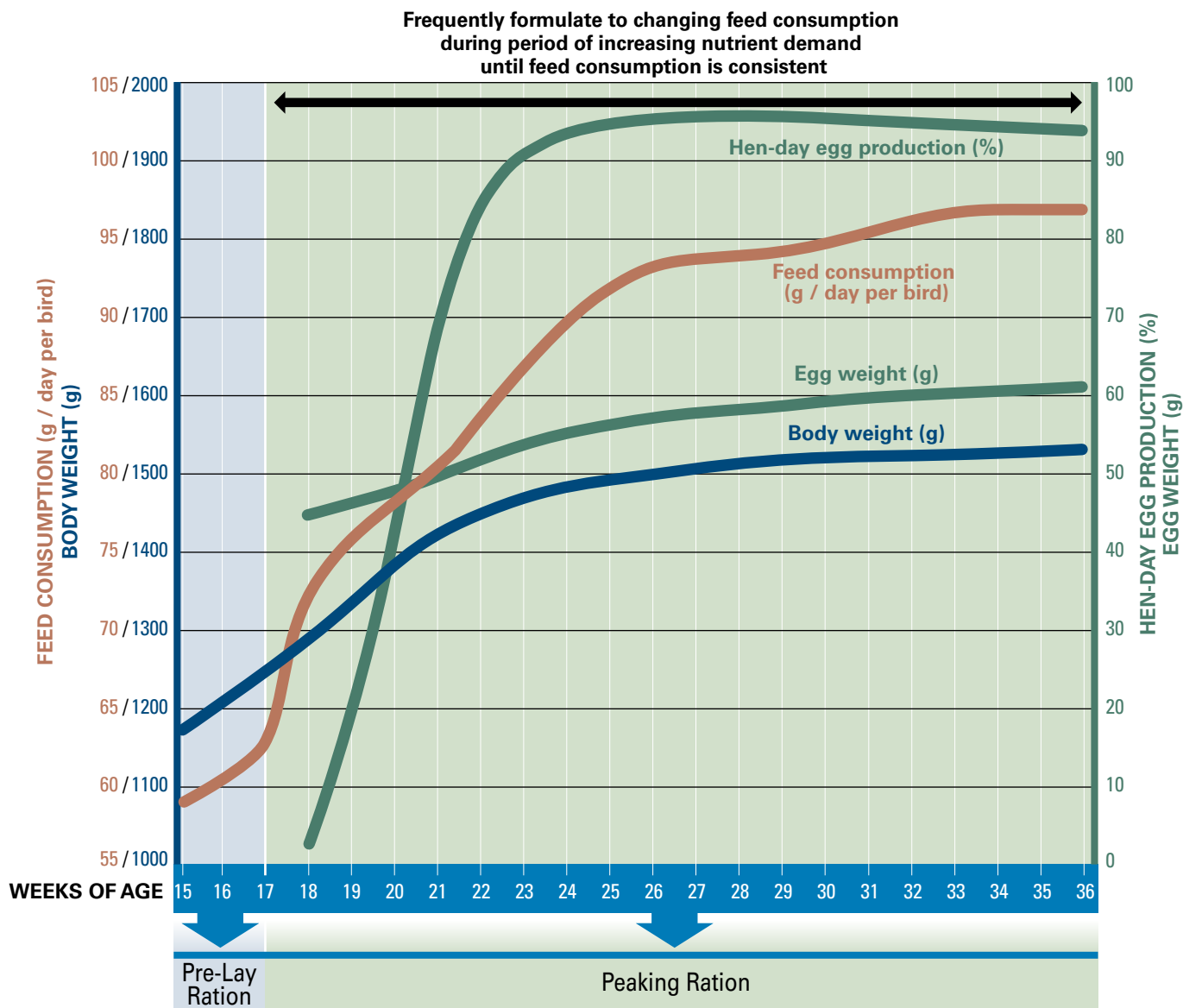
⁴ Recommendation for Total Amino Acids is only appropriate to corn and soybean meal diet. Where diets utilize other ingredients, recommendations for Standardized Ileal Digestible Amino Acids must be followed.

⁵ Diets should always be formulated to provide required intake of amino acid. Concentration of crude protein in diet will vary with raw material used. Crude protein value provided is an estimated typical value only.

⁶ Calcium should be supplied as fine calcium carbonate (mean particle size less than 2 mm). Coarse limestone (2–4 mm) can be introduced in Pre-Lay Diet at up to 50% of total limestone. When limestone solubility or purity is less than desired, coarse limestone (2–4 mm) can be eliminated from the Pre-Lay Diet.

⁷ Where other phosphorus systems are used, diets should contain recommended minimum level of available phosphorus.

Transition Period from Grow to Peak Egg Production



- During the transition period, nutrient requirements increase dramatically.
- Occurring during the transition period:
 - Rapidly increasing egg production
 - Increasing egg size
 - Increasing body weight
- Feed consumption may increase slowly during transition:
 - In underweight birds
 - In flocks lacking uniformity
 - During high environmental temperatures
- Poor uniformity prolongs the transition period and may result in low peak and poor persistency of egg production.
- Monitor feed intake carefully during transition and adjust dietary nutrient concentration accordingly.

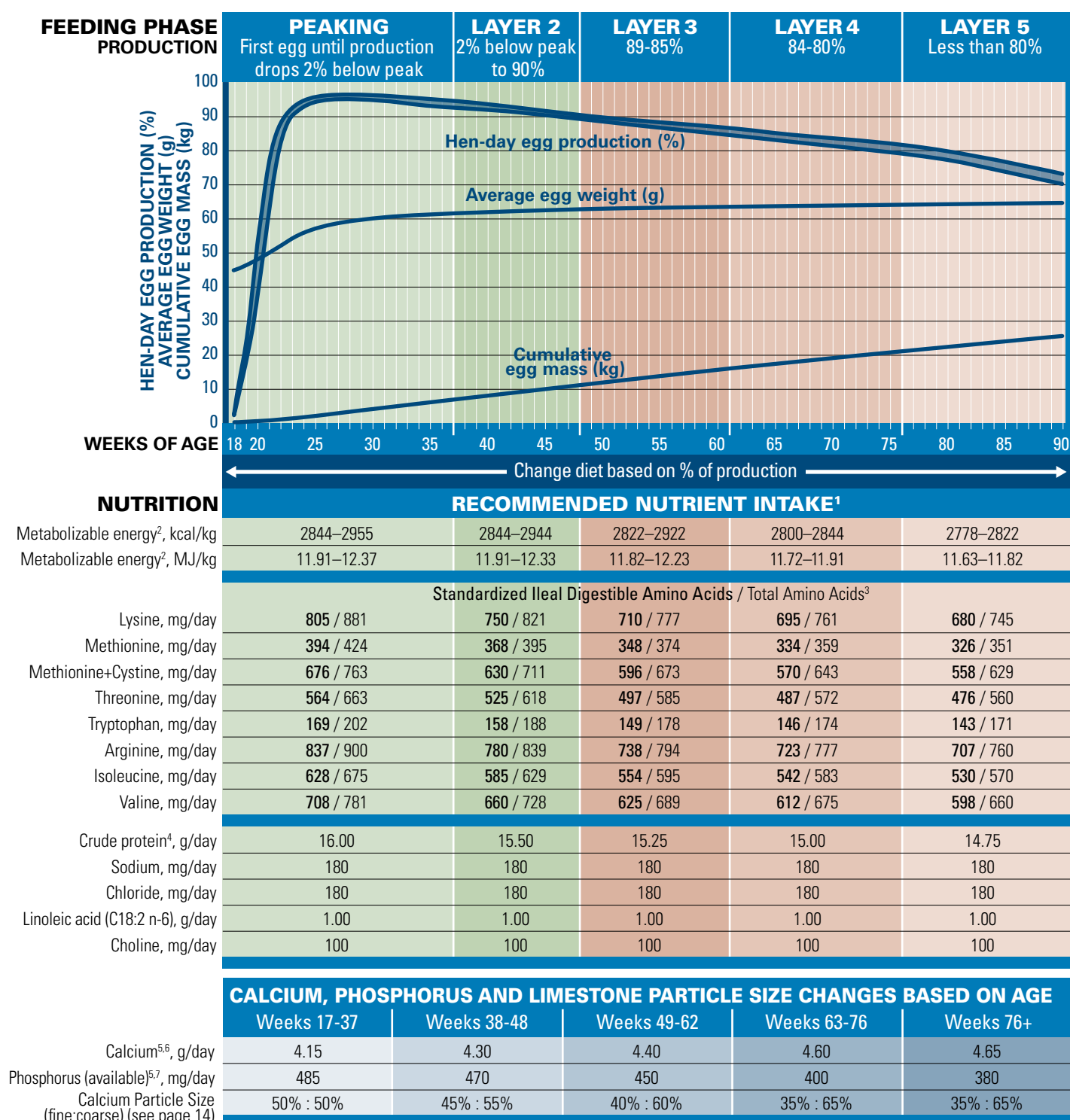
Pre-Lay Ration

- Feed when most pullets show reddening of combs.
- It is important to increase medullary bone reserves.
- Plan to feed for a maximum of 10–14 days before point of lay.
- Begin introducing large particle calcium in Pre-Lay Diet.

Peaking Ration

- Formulations for low feed intakes (80–85 g / day per bird) should be given to better meet nutrient requirements.
- Begin Peaking Diet with onset of lay (1% egg production).
- Ensure that Peaking Diet is in the feeders when first eggs are laid, not in the feed bin.

Production Period Nutritional Recommendations



¹ Crude protein, methionine+cystine, fat, linoleic acid, and / or energy may be changed to optimize egg size.

² Recommended energy range is based on energy values shown in feed ingredient table at back of this guide. It is important that target concentrations of dietary energy are adjusted according to energy system applied to raw material matrix if values differ from those referred for raw materials in this guide.

³ Recommendation for Total Amino Acids is only appropriate to corn and soybean meal diet. Where diets utilize other ingredients, recommendations for Standardized Ileal Digestible Amino Acids must be followed.

⁴ Diets should always be formulated to provide required intake of amino acid. Concentration of crude protein in diet will vary with raw material used. Crude protein value provided is an estimated typical value only.

⁵ Calcium and available phosphorus requirements are determined by flock age. When production remains higher and diets are fed for longer than ages shown, it is recommended to increase to calcium and phosphorus concentrations of next feeding phase.

⁶ Calcium carbonate particle size recommendation varies throughout lay. Refer to Calcium Particle Size Table. Dietary calcium levels may need to be adjusted based on limestone solubility.

⁷ Where other phosphorus systems are used, diets should contain recommended minimum level of available phosphorus.

Dietary Nutrient Concentrations for Production Period *(According to Phase and Feed Intake)*

FEEDING PHASE PRODUCTION		PEAKING First egg until production drops 2% below peak					LAYER 2 2% below peak to 90%					LAYER 3 89–85%					LAYER 4 84–80%					LAYER 5 Less than 80%				
		RECOMMENDED CONCENTRATION ¹																								
NUTRITION Metabolizable energy ² , kcal/kg Metabolizable energy ² , MJ/kg		2844–2955					2844–2944					2822–2922					2800–2844					2778–2822				
		11.91–12.37					11.91–12.33					11.82–12.23					11.72–11.91					11.63–11.82				
g/day per bird		FEED CONSUMPTION (*Typical Feed Consumption)																								
		74	79	84*	89	94	86	91	96*	101	106	90	95	100*	105	110	84	89	94*	99	104	83	88	93*	98	103
Lysine, %		Standardized Ileal Digestible Amino Acids																								
		1.09	1.02	0.96	0.90	0.86	0.87	0.82	0.78	0.74	0.71	0.79	0.75	0.71	0.68	0.65	0.83	0.78	0.74	0.70	0.67	0.82	0.77	0.73	0.69	0.66
Methionine, %		0.53	0.50	0.47	0.44	0.42	0.43	0.40	0.38	0.36	0.35	0.39	0.37	0.35	0.33	0.32	0.41	0.38	0.36	0.34	0.33	0.39	0.37	0.35	0.33	0.32
		0.91	0.86	0.81	0.76	0.72	0.73	0.69	0.66	0.62	0.59	0.66	0.63	0.60	0.57	0.54	0.70	0.66	0.62	0.59	0.56	0.67	0.63	0.60	0.57	0.54
Methionine+Cystine, %		0.76	0.71	0.67	0.63	0.60	0.61	0.58	0.55	0.52	0.50	0.55	0.52	0.50	0.47	0.45	0.58	0.55	0.52	0.49	0.47	0.57	0.54	0.51	0.49	0.46
		0.23	0.21	0.20	0.19	0.18	0.18	0.17	0.16	0.16	0.15	0.17	0.16	0.15	0.14	0.14	0.17	0.16	0.16	0.15	0.14	0.17	0.16	0.15	0.15	0.14
Tryptophan, %		1.13	1.06	1.00	0.94	0.89	0.91	0.86	0.81	0.77	0.74	0.82	0.78	0.74	0.70	0.67	0.86	0.81	0.77	0.73	0.70	0.85	0.80	0.76	0.72	0.69
		0.85	0.79	0.75	0.71	0.67	0.68	0.64	0.61	0.58	0.55	0.62	0.58	0.55	0.53	0.50	0.65	0.61	0.58	0.55	0.52	0.64	0.60	0.57	0.54	0.51
Isoleucine, %		0.96	0.90	0.84	0.80	0.75	0.77	0.73	0.69	0.65	0.62	0.69	0.66	0.62	0.60	0.57	0.73	0.69	0.65	0.62	0.59	0.72	0.68	0.64	0.61	0.58
		Total Amino Acids ³																								
Lysine, %		1.19	1.12	1.05	0.99	0.94	0.95	0.90	0.86	0.81	0.77	0.86	0.82	0.78	0.74	0.71	0.91	0.85	0.81	0.77	0.73	0.90	0.85	0.80	0.76	0.72
		0.57	0.54	0.50	0.48	0.45	0.46	0.43	0.41	0.39	0.37	0.42	0.39	0.37	0.36	0.34	0.43	0.40	0.38	0.36	0.34	0.42	0.40	0.38	0.36	0.34
Methionine, %		1.03	0.97	0.91	0.86	0.81	0.83	0.78	0.74	0.70	0.67	0.75	0.71	0.67	0.64	0.61	0.77	0.72	0.68	0.65	0.62	0.76	0.71	0.68	0.64	0.61
		0.90	0.84	0.79	0.74	0.71	0.72	0.68	0.64	0.61	0.58	0.65	0.62	0.58	0.56	0.53	0.68	0.64	0.61	0.58	0.55	0.67	0.64	0.60	0.57	0.54
Methionine+Cystine, %		0.27	0.26	0.24	0.23	0.21	0.22	0.21	0.20	0.19	0.18	0.20	0.19	0.18	0.17	0.16	0.21	0.20	0.19	0.18	0.17	0.21	0.19	0.18	0.17	0.17
		1.22	1.14	1.07	1.01	0.96	0.98	0.92	0.87	0.83	0.79	0.88	0.84	0.79	0.76	0.72	0.93	0.87	0.83	0.79	0.75	0.92	0.86	0.82	0.78	0.74
Tryptophan, %		0.91	0.85	0.80	0.76	0.72	0.73	0.69	0.66	0.62	0.59	0.66	0.63	0.60	0.57	0.54	0.69	0.65	0.62	0.59	0.56	0.69	0.65	0.61	0.58	0.55
		1.06	0.99	0.93	0.88	0.83	0.85	0.80	0.76	0.72	0.69	0.77	0.73	0.69	0.66	0.63	0.80	0.76	0.72	0.68	0.65	0.80	0.75	0.71	0.67	0.64
Valine, %		21.62	20.25	19.05	17.98	17.02	18.02	17.03	16.15	15.35	14.62	16.94	16.05	15.25	14.52	13.86	17.86	16.85	15.96	15.15	14.42	17.77	16.76	15.86	15.05	14.32
		0.24	0.23	0.21	0.20	0.19	0.21	0.20	0.19	0.18	0.17	0.20	0.19	0.18	0.17	0.16	0.21	0.20	0.19	0.18	0.17	0.22	0.20	0.19	0.18	0.17
Crude protein ⁴ , %		0.24	0.23	0.21	0.20	0.19	0.21	0.20	0.19	0.18	0.17	0.20	0.19	0.18	0.17	0.16	0.21	0.20	0.19	0.18	0.17	0.22	0.20	0.19	0.18	0.17
		1.35	1.27	1.19	1.12	1.06	1.16	1.10	1.04	0.99	0.94	1.11	1.05	1.00	0.95	0.91	1.19	1.12	1.06	1.01	0.96	1.20	1.14	1.08	1.02	0.97
Linoleic acid (C18:2 n-6), %		CALCIUM, PHOSPHORUS AND LIMESTONE PARTICLE SIZE CHANGES BASED ON AGE																								
		Weeks 17–37					Weeks 38–48					Weeks 49–62					Weeks 63–76					Weeks 76+				
Feed Consumption, g/day per bird		74	79	84	89	94	86	91	96	101	106	90	95	100	105	110	84	89	94	99	104	83	88	93	98	103
		5.61	5.25	4.94	4.66	4.41	5.00	4.73	4.48	4.26	4.06	4.89	4.63	4.40	4.19	4.00	5.48	5.17	4.89	4.65	4.42	5.60	5.28	5.00	4.74	4.51
Phosphorus (available) ^{5,7} , %		0.66	0.61	0.58	0.54	0.52	0.55	0.52	0.49	0.47	0.44	0.50	0.47	0.45	0.43	0.41	0.48	0.45	0.43	0.40	0.38	0.46	0.43	0.41	0.39	0.37
		50% : 50%					45% : 55%					40% : 60%					35% : 65%					35% : 65%				
Calcium Particle Size (fine:coarse) (see page 14)																										

¹ Crude protein, methionine+cystine, fat, linoleic acid, and / or energy may be changed to optimize egg size.

² Recommended energy range is based on energy values shown in feed ingredient table at back of this guide. It is important that target concentrations of dietary energy are adjusted according to energy system applied to raw material matrix if values differ from those referred for raw materials in this guide.

³ Recommendation for Total Amino Acids is only appropriate to corn and soybean meal diet. Where diets utilize other ingredients, recommendations for Standardized Ileal Digestible Amino Acids must be followed.

⁴ Diets should always be formulated to provide required intake of amino acid. Concentration of crude protein in diet will vary with raw material used. Crude protein value provided is an estimated typical value only.

⁵ Calcium and available phosphorus requirements are determined by flock age. When production remains higher and diets are fed for longer than ages shown, it is recommended to increase to calcium and phosphorus concentrations of next feeding phase.

⁶ Calcium carbonate particle size recommendation varies throughout lay. Refer to Calcium Particle Size Table. Dietary calcium levels may need to be adjusted based on limestone solubility.

⁷ Where other phosphorus systems are used, diets should contain recommended minimum level of available phosphorus.

Non-Fasting Molt Recommendations

(Check with local authorities concerning molting)

Decision to molt is based on:

- Projected feed costs
- Egg prices
- Differential prices between egg sizes
- Cost of pullet replacement
- Value of hens at end of lay
- Flock performance

Non-Fasting Molt

- Hy-Line laying hens will perform very well after a rest.
- The optimum age for molting is usually between 65 (early) to 75 (late) weeks of age.
- Induced molting can extend the productive life of a flock by improving rate of lay, shell quality, and albumen height.
- Post-molt performance will be lower than best pre-molt values.
- Egg size will essentially remain unaffected and will continue to increase after egg production resumes.
- Birds need free access to water at all times.

- High sodium levels in drinking water (i.e., 100 ppm or higher) can adversely affect non-fasting molt.
- Best post-molt egg production is achieved after complete cessation of egg production that lasts for at least 2 weeks.
- The goal is to maintain 18 week body weight (1.26–1.30 kg) during rest period.
- Reducing body weight to 18 week body weight (approximately 23% reduction) will result in best post-molt performance.
- After initial body weight loss, body weight can be held steady by a combination of adjusting the number of feedings per day and / or a shift to a higher-energy (laying-hen-type) diet.
- Closely monitor body weight of flock during molt process.
- Body weights should be collected twice per week, from the same cages every time.
- Cages should be selected from bottom, middle and top tiers; all rows; and from front, middle and end of house.

Non-Fasting Molt Program

MOLT DAY	LIGHT (hours per day)	FEED TYPE	FEED MODIFICATION ¹	FEED INTAKE ² (g / day per bird)	HOUSE TEMPERATURE ³ (°C)	COMMENTS
-7 to -5	16	Layer diet	Fine-particle CaCO ₃	Full feed	24–25	Remove large-particle size CaCO ₃ and replace with fine-particle CaCO ₃ (less than 2 mm mean diameter). Do NOT change percent calcium in laying-hen diet
-4 to -1	24	Layer diet	Fine-particle CaCO ₃ , no added salt (NaCl)	Full feed	24–25	
0–6	6–8 ⁴	Molt diet ⁵	Fine-particle CaCO ₃	54–64	27–28	Higher house temperatures will reduce feed intake and facilitate reduction in body weight to 18 week target weight (Note: white laying hens should not lose more than 25% of the pre-molt body weight)
7–17	6–8	Molt diet	—	54–64	27–28	Maintain body weight
18–19	12 or 16 ⁶	Layer diet ⁷	Mixture of fine- and coarse-particle CaCO ₃ as in a normal layer diet	64–73	27–28	Control (limit) feed intake to avoid fat birds
20–21	16 ⁶	Layer diet ⁷	—	Full feed	26–27	Lower house temperature as needed to increase feed intake
22–24	16	Layer diet ⁷	—	Full feed ⁷	24–25	Lower ambient temperature to “normal”

¹ May include a probiotic or prebiotic through all stages of molt program.

² Feed intake depends on house temperature. Lower temperatures (colder) may require more feed.

³ Monitor air quality in house. Suggested house temperatures may not be achievable in cold weather.

⁴ Set lights at 8 hours or natural day length in open-sided houses. Normally not necessary to change light intensity.

⁵ Molt Diet is high in fiber (low in energy) and contains no added sodium (Na) (i.e., no added NaCl or NaHCO₃).

⁶ Light stimulate birds into production by increasing light hours to number of hours they were given before molt (i.e., 15 or 16 hours). Increase can be performed in a single day (i.e., from 8 hours to 16 hours in a single day) or two weekly steps (i.e., from 8 to 12 hours and then from 12 to 16 hours). Monitor and control feed intake for first few days after light stimulation to avoid fat birds as they return into lay (which would significantly increase egg weight in second cycle).

⁷ According to post-molt nutrition recommendations.

Molt Diet Recommendations

NUTRITION	RECOMMENDED NUTRIENT CONCENTRATION
Metabolizable energy ¹ , kcal/kg	2205–2800
Metabolizable energy ¹ , MJ/kg	9.32–11.72
	Standardized Ileal Digestible Amino Acids / Total Amino Acids ²
Lysine, %	0.30 / 0.33
Methionine, %	0.15 / 0.16
Methionine+Cystine, %	0.32 / 0.36
Threonine, %	0.18 / 0.21
Tryptophan, %	0.10 / 0.12
Arginine, %	0.38 / 0.41
Isoleucine, %	0.18 / 0.20
Valine, %	0.23 / 0.26
Crude protein ³ , %	8.50
Calcium ⁴ , %	1.3–2.0
Phosphorus (available), %	0.35
Sodium ⁵ , %	0.03
Chloride, %	0.03

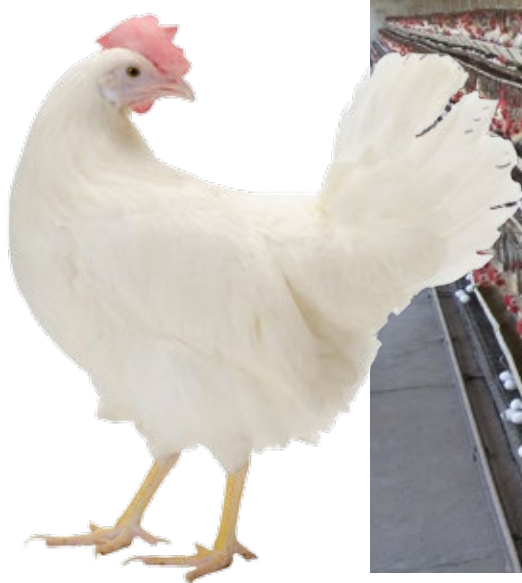
¹ Recommended energy range is based on energy values shown in feed ingredient table at back of this guide. It is important that target concentrations of dietary energy are adjusted according to energy system applied to raw material matrix if values differ from those referred for raw materials in this guide.

² Recommendation for Total Amino Acids is only appropriate to corn and soybean meal diet. Where diets utilize other ingredients, recommendations for Standardized Ileal Digestible Amino Acids must be followed.

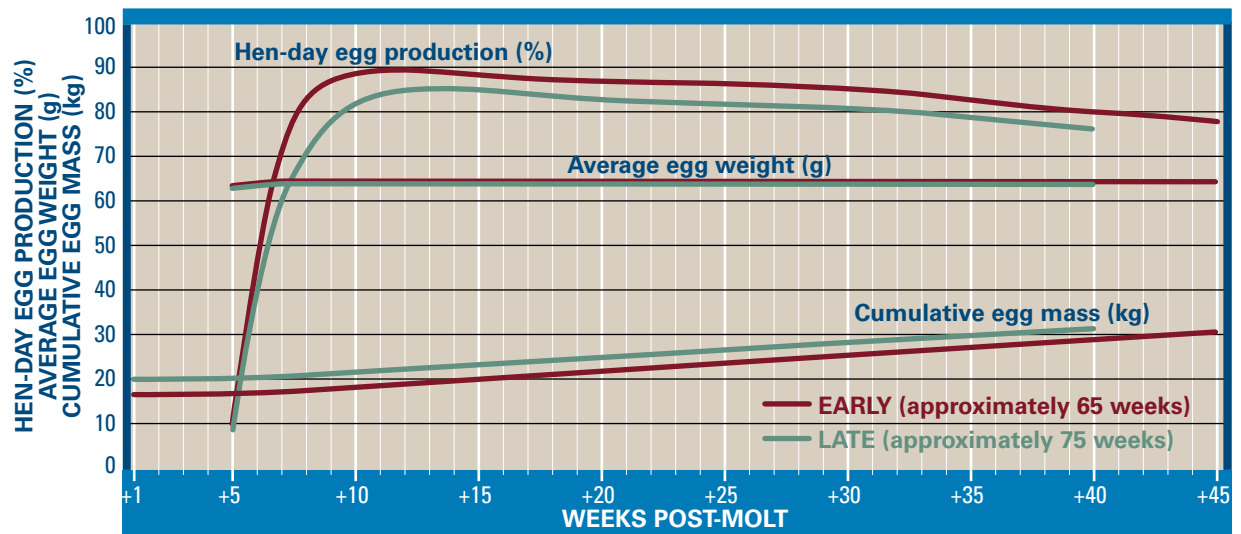
³ Diets should always be formulated to provide required intake of amino acid. Concentration of crude protein in diet will vary with raw material used. Crude protein value provided is an estimated typical value only.

⁴ Calcium carbonate should be in particle sizes of less than 2 mm.

⁵ Sodium content in Molt Diet should not exceed 0.035%.



Post-Molt Nutrition Recommendations



After the Molt diet, when egg production commences, formulate diets according to level of desired percentage egg production and egg weight. The Post-Molt diets are formulated similar to that of the last Laying Diet fed, albeit with the following modifications:

- 20 kcal/kg (0.08 MJ/kg) less energy
- 5% reduction in amino acid levels (corresponding to approximately 0.25 percentage points less crude protein)
- Increased calcium content (see table below)
- Decreased available-phosphorus content (see table below)

		RECOMMENDED POST-MOLT DIETARY CALCIUM AND PHOSPHORUS CHANGES BASED ON PRODUCTION																			
		Peak to 83%					83–78%					77–75%					Less than 75%				
Feed consumption, g/day/bird		90	95	100	105	110	93	98	103	108	113	93	98	103	108	113	93	98	103	108	113
Calcium, %		4.83	4.58	4.35	4.14	3.95	4.89	4.64	4.42	4.21	4.03	5.11	4.85	4.61	4.40	4.20	5.32	5.05	4.81	4.58	4.38
Phosphorus (available) ¹ , %		0.56	0.53	0.50	0.48	0.45	0.48	0.46	0.44	0.42	0.40	0.43	0.41	0.39	0.37	0.35	0.38	0.36	0.34	0.32	0.31
Calcium Particle Size (fine:coarse) (see page 14)		35% : 65%					35% : 65%					35% : 65%					35% : 65%				

*65% of calcium carbonate should be in 2–4 mm particle size.

¹ Where other phosphorus systems are used, diets should contain recommended minimum level of available phosphorus.

Disease Control

A flock of pullets or layers can only perform up to its genetic potential when disease influence is minimized. The diseases of economic importance vary widely between locations, but in every case the challenge is to identify and control those diseases.

Biosecurity

Biosecurity is the best method of avoiding diseases. A good biosecurity program identifies and controls the most likely ways a disease could enter the farm.

- Human and equipment movement onto the farm should be strictly controlled.
- Visitors to the farm should be limited to those essential for its operation.
- Visits should be documented in a logbook.
- All visitors and workers should shower at a central location before entering.
- Clean boots, clothing and head cover should be provided for workers and visitors.
- Clean footbaths containing disinfectant should be placed outside entries to all poultry houses.
- If possible, avoid using outside crews or equipment for vaccination, moving, and beak trimming.
- Ideally, workers should be limited to a single house.
- For those visiting a number of flocks, flocks visited on one day should be limited. Always progress from younger to older and from healthy to sick flocks. After visiting a sick flock, no other houses should be entered.
- Removal of flocks from the farm is an opportunity for disease to be introduced, as trucks and crews have often been on other farms.
- A single-aged growing farm using an all-in, all-out principle is best to prevent transmission of disease from older flocks to younger, susceptible flocks.
- Houses should be designed to prevent exposure to wild birds, insects and rodents.
- Quickly and properly dispose of dead chickens.

Rodents

Rodents are known carriers of many poultry diseases and the most common reason for re-contamination of a cleaned and disinfected poultry facility. They are also responsible for house-to-house spread of disease on a farm.

- The farm should be free of debris and tall grass that provide a hiding area for rodents.
- The perimeter of each house should have a 1 m wide area of crushed rock or concrete to prevent rodents from burrowing into the house.
- Feed and eggs should be stored in rodent-proof areas.
- Bait stations should be placed throughout the house and maintained with fresh rodenticide.

Cleaning and Disinfection

Cleaning and disinfection of the house between flocks reduces infection pressure for the next flock.

- Allow a minimum of 2 weeks downtime between flocks.
- All feed and manure should be removed from the house before cleaning.
- Thoroughly clean air inlets, fan housing, fan blades and fan louvers.
- Heating the house during washing improves the removal of organic matter.

- The house should be cleaned of organic matter with a high-pressure spray of warm water.
- Use foam / gel detergent to soak into organic matter and equipment.
- Wash the upper portion of the house before the pit.
- Use high pressure warm water to rinse.
- Allow the house to dry.
- After it is fully dry, apply foam / spray disinfectant followed by fumigation.
- Flush and sanitize water lines.
- The monitoring of poultry houses for the presence of *Salmonella*, particularly *Salmonella enteritidis*, by routine environmental testing is recommended.
- Allow the house to dry before repopulating.

Vertically Transmitted Diseases

- Some diseases are known to be transmitted from infected breeders to progeny.
- Disease-free breeders are the first step in control of these diseases for commercial layers.
- All breeders directly under Hy-Line International's control are free of *Mycoplasma gallisepticum*, *Mycoplasma synoviae*, *Salmonella pullorum*, *Salmonella gallinarum*, *Salmonella enteritidis*, *Salmonella typhimurium* and lymphoid leukosis.
- Due to the possibility of horizontal transmission of these diseases, later generations may not remain free.
- It is the responsibility of breeding and commercial flock owners to prevent horizontal transmission of these diseases and to continue testing to be assured of a negative status.



COCCIDIA

This parasitic infection of the intestines may lead to gut damage and, in severe infestations, death. More commonly, poor control of sub-clinical infection reduces feed conversion or leaves pullets with chronic, irreversible gut damage. Pullet flocks may be uneven or underweight at housing and not perform to their full potential in lay. Control of coccidia includes the following measures (check local regulations):

- Use ionophores or chemicals on a step-down program to ensure immunity in pullets.
- Live vaccine use is an alternative to anti-coccidial drug treatments.
- Live vaccines are available that can be administered by spray in the hatchery or by feed or water application during the first few days in the brooder house.
- Control of flies and beetles, which are vectors of coccidia spread.
- Thorough cleaning and disinfection of houses reduces challenge pressure.
- Limit bird access to manure belts.
- Cocco vaccines require cycling; discuss this with the vaccine manufacturer.

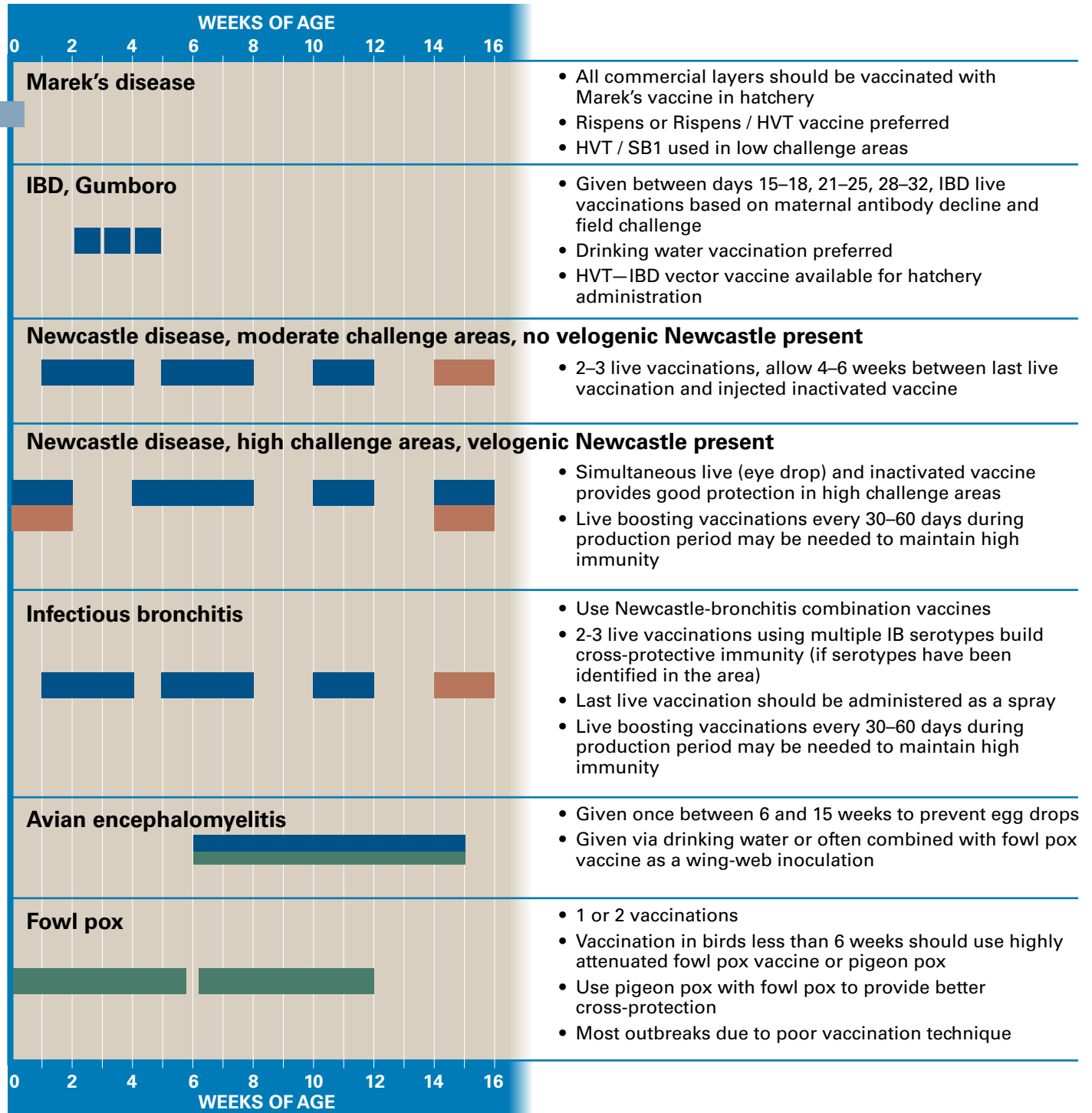
Vaccination Recommendations

Vaccination

Certain diseases are too widespread or difficult to eradicate and require a routine vaccination program. In general, all layer flocks should be vaccinated against Marek's disease, Newcastle disease (NDV), infectious bronchitis (IB), infectious bursal disease (IBD or Gumboro), avian encephalomyelitis (AE) and fowl pox.

A single program cannot be recommended for all regions. Follow label instructions provided by the vaccine manufacturer. Use only approved vaccines. Consult with local veterinarians to determine the best vaccination program for your area.

BASIC COMMERCIAL LAYER VACCINE APPLICATIONS



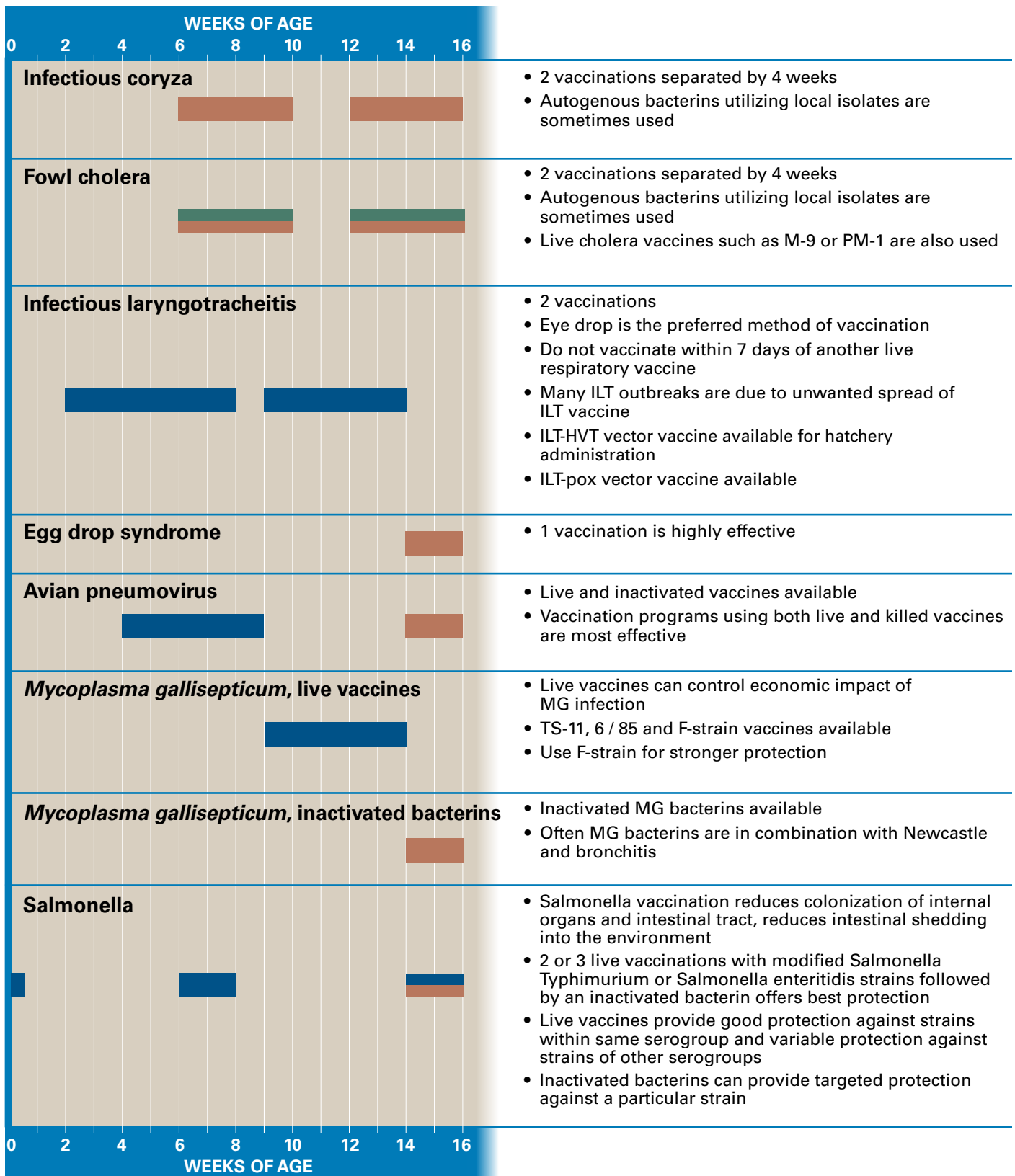
Live hatchery vaccines, given subcutaneous
 Live vaccines, administered by drinking water, spray or eyedrop

Live vaccines, administered via wing-web inoculation
 Inactivated vaccines, injected via intramuscular or subcutaneous route

Vaccination Recommendations *(continued)*

OPTIONAL COMMERCIAL LAYER VACCINE APPLICATIONS

Use if these diseases are prevalent in the area. Follow label instructions provided by the vaccine manufacturer. Use only approved vaccines. Consult a local veterinarian for advice in designing an effective vaccination program for your farm.



Live hatchery vaccines, given subcutaneous
 Live vaccines, administered by drinking water, spray or eyedrop

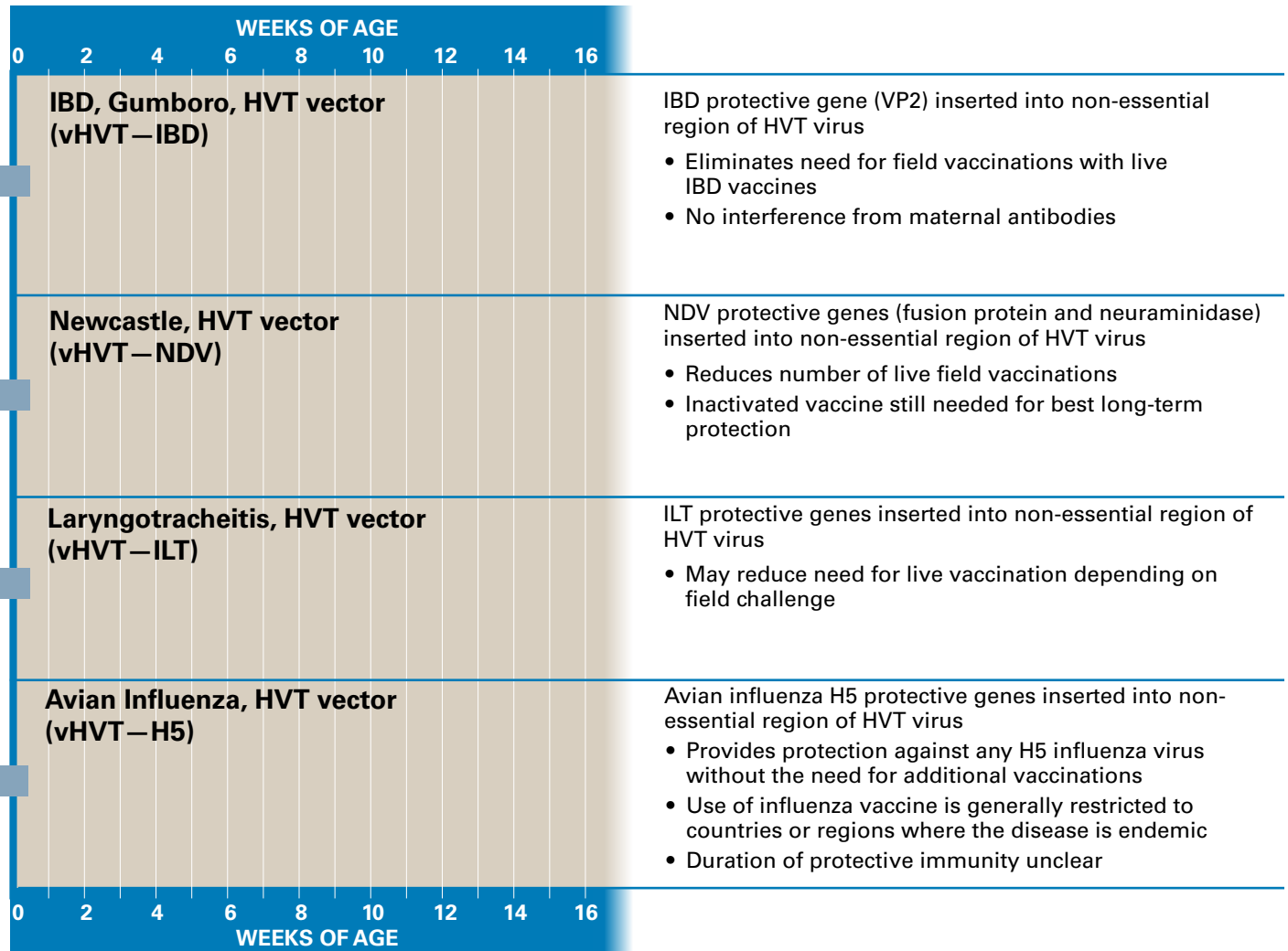
Live vaccines, administered via wing-web inoculation
 Inactivated vaccines, injected via intramuscular or subcutaneous route



Vaccination Recommendations *(continued)*

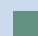

RECOMBINANT HVT VACCINES

Vaccines using recombinant vector technology offer the convenience of hatchery administration with no adverse effects caused by some live field vaccinations. For best Marek's disease protection use Rispens vaccine in combination with recombinant HVT vaccine.

CAUTION: Do not use another HVT vaccine when using HVT-vectored vaccines.



 Live hatchery vaccines, given subcutaneous
 Live vaccines, administered by drinking water, spray or eyedrop

 Live vaccines, administered via wing-web inoculation
 Inactivated vaccines, injected via intramuscular or subcutaneous route

Performance Table

AGE (weeks)	% HEN-DAY Current	HEN-DAY EGGS Cumulative	HEN-HOUSED EGGS Cumulative	MORTALITY Cumulative (%)	BODY WEIGHT (kg)	FEED INTAKE (g / day per bird)	HEN- HOUSED EGG MASS Cumulative (kg)	AVERAGE EGG WEIGHT* (g / egg)
18	2 – 3	0.1 – 0.2	0.1 – 0.2	0.0	1.26 – 1.30	70 – 76	0.01	44.6
19	15 – 22	1.3 – 1.7	1.3 – 1.7	0.1	1.32 – 1.36	73 – 79	0.06	45.7
20	35 – 50	3.7 – 5.2	3.7 – 5.2	0.1	1.36 – 1.40	76 – 82	0.2	46.9
21	62 – 75	8.1 – 10.4	8.0 – 10.4	0.2	1.41 – 1.45	77 – 83	0.4	49.6
22	82 – 88	13.8 – 16.6	13.8 – 16.6	0.3	1.44 – 1.48	80 – 86	0.7	52.3
23	90 – 92	20.1 – 23.0	20.0 – 23.0	0.4	1.45 – 1.49	84 – 90	1.0	53.7
24	93 – 94	26.6 – 29.6	26.5 – 29.5	0.4	1.46 – 1.50	87 – 93	1.4	55.0
25	94 – 96	33.2 – 36.3	33.1 – 36.2	0.5	1.47 – 1.51	89 – 95	1.7	56.4
26	95 – 96	39.8 – 43.1	39.7 – 42.9	0.6	1.48 – 1.52	91 – 97	2.1	57.1
27	95 – 96	46.5 – 49.8	46.3 – 49.6	0.7	1.49 – 1.53	91 – 97	2.5	57.6
28	95 – 96	53.1 – 56.5	52.9 – 56.2	0.8	1.49 – 1.53	91 – 97	2.9	58.0
29	95 – 96	59.8 – 63.2	59.5 – 62.9	0.9	1.50 – 1.54	91 – 97	3.3	58.6
30	95 – 96	66.4 – 69.9	66.1 – 69.5	1.0	1.50 – 1.54	91 – 97	3.7	59.2
31	95 – 96	73.1 – 76.7	72.6 – 76.2	1.0	1.50 – 1.54	93 – 99	4.1	59.6
32	94 – 96	79.7 – 83.4	79.1 – 82.8	1.1	1.50 – 1.54	93 – 99	4.4	59.7
33	94 – 95	86.2 – 90.0	85.6 – 89.4	1.2	1.50 – 1.54	94 – 100	4.8	60.2
34	93 – 95	92.8 – 96.7	92.1 – 96.0	1.3	1.51 – 1.55	94 – 100	5.2	60.7
35	93 – 95	99.3 – 103.3	98.5 – 102.5	1.3	1.51 – 1.55	94 – 100	5.6	60.8
36	93 – 95	105.8 – 110.0	104.9 – 109.1	1.4	1.51 – 1.55	94 – 100	6.0	61.0
37	92 – 94	112.2 – 116.6	111.3 – 115.6	1.5	1.52 – 1.56	94 – 100	6.4	61.1
38	92 – 94	118.7 – 123.1	117.6 – 122.1	1.5	1.52 – 1.56	94 – 100	6.8	61.2
39	92 – 93	125.1 – 129.6	123.9 – 128.5	1.6	1.52 – 1.56	95 – 101	7.2	61.3
40	92 – 93	131.5 – 136.2	130.3 – 134.9	1.7	1.52 – 1.56	95 – 101	7.6	61.5
41	92 – 93	138.0 – 142.7	136.6 – 141.3	1.7	1.52 – 1.56	94 – 100	8.0	61.7
42	91 – 92	144.3 – 149.1	142.9 – 147.6	1.8	1.52 – 1.56	95 – 101	8.3	62.2
43	91 – 92	150.7 – 155.5	149.1 – 153.9	1.9	1.52 – 1.56	95 – 101	8.7	62.2
44	90 – 92	157.0 – 162.0	155.3 – 160.2	1.9	1.53 – 1.57	95 – 101	9.1	62.3
45	90 – 91	163.3 – 168.4	161.5 – 166.5	2.0	1.53 – 1.57	95 – 101	9.5	62.4
46	90 – 91	169.6 – 174.7	167.6 – 172.7	2.0	1.53 – 1.57	96 – 102	9.9	62.5
47	90 – 91	175.9 – 181.1	173.8 – 178.9	2.1	1.53 – 1.57	96 – 102	10.3	62.6
48	89 – 90	182.1 – 187.4	179.9 – 185.1	2.2	1.53 – 1.57	96 – 102	10.7	62.6
49	89 – 90	188.4 – 193.7	186.0 – 191.3	2.3	1.53 – 1.57	97 – 103	11.0	62.7
50	89 – 90	194.6 – 200.0	192.1 – 197.4	2.4	1.53 – 1.57	97 – 103	11.4	62.7
51	88 – 89	200.8 – 206.2	198.1 – 203.5	2.5	1.53 – 1.57	97 – 103	11.8	62.8
52	88 – 89	206.9 – 212.5	204.1 – 209.6	2.6	1.54 – 1.58	97 – 103	12.2	62.9
53	87 – 89	213.0 – 218.7	210.0 – 215.6	2.7	1.54 – 1.58	97 – 103	12.5	63.0
54	87 – 88	219.1 – 224.8	215.9 – 221.6	2.8	1.54 – 1.58	97 – 103	12.9	63.0
55	87 – 88	225.2 – 231.0	221.8 – 227.6	2.9	1.54 – 1.58	97 – 103	13.3	63.1
56	86 – 88	231.2 – 237.2	227.7 – 233.6	3.0	1.54 – 1.58	97 – 103	13.7	63.1
57	86 – 87	237.2 – 243.3	233.5 – 239.5	3.1	1.54 – 1.58	97 – 103	14.0	63.2
58	86 – 87	243.3 – 249.3	239.3 – 245.4	3.2	1.54 – 1.58	97 – 103	14.4	63.2
59	85 – 87	249.2 – 255.4	245.1 – 251.2	3.3	1.54 – 1.58	97 – 103	14.8	63.3
60	85 – 87	255.2 – 261.5	250.8 – 257.1	3.4	1.54 – 1.58	96 – 102	15.1	63.3

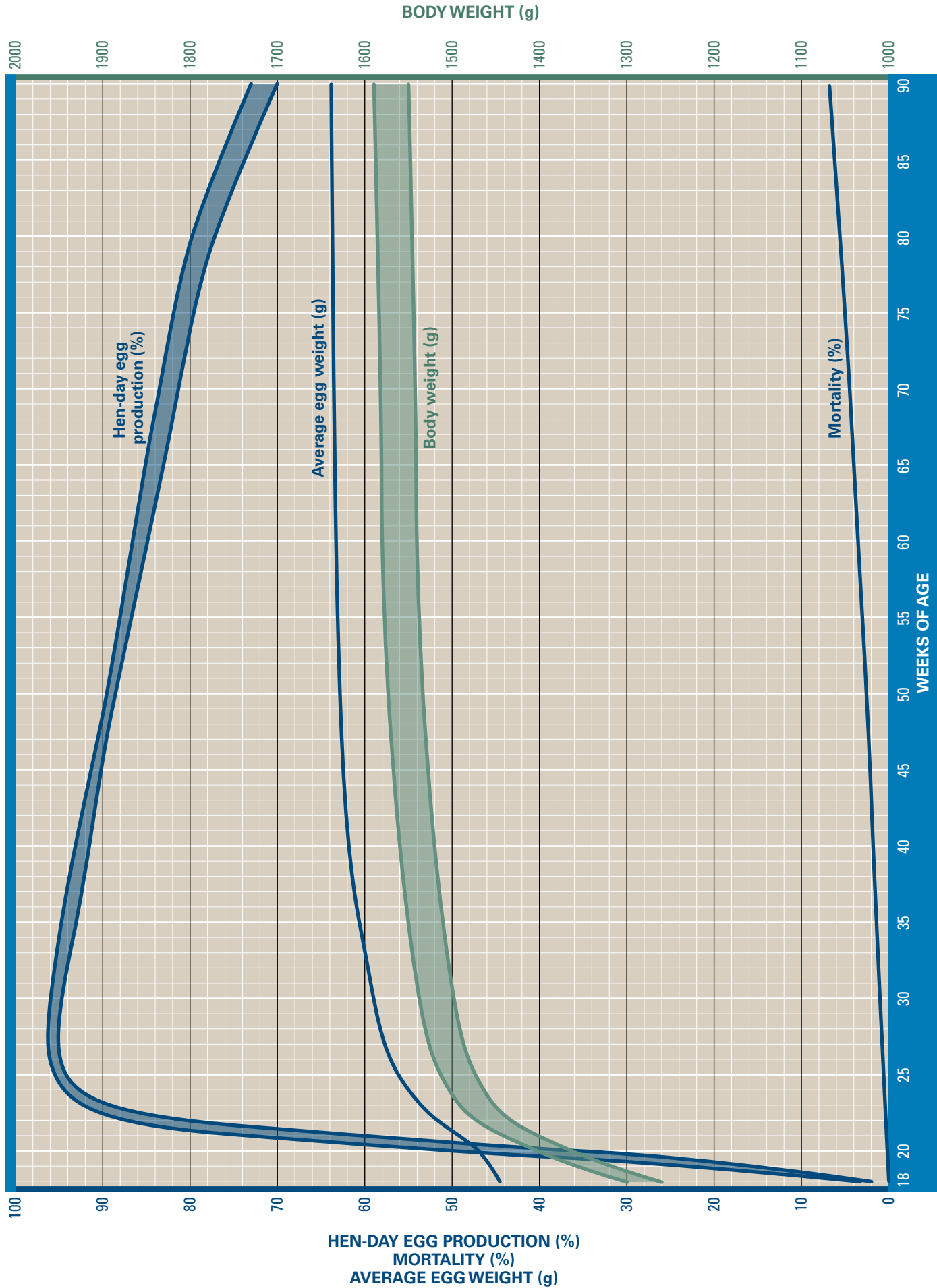
* Egg weights after 40 weeks of age assume phase feeding of protein to limit egg size.

Performance Table *(continued)*

AGE (weeks)	% HEN-DAY Current	HEN-DAY EGGS Cumulative	HEN-HOUSED EGGS Cumulative	MORTALITY Cumulative (%)	BODY WEIGHT (kg)	FEED INTAKE (g / day per bird)	HEN- HOUSED EGG MASS Cumulative (kg)	AVERAGE EGG WEIGHT* (g / egg)
61	85 – 86	261.1 – 267.5	256.6 – 262.9	3.5	1.54 – 1.58	96 – 102	15.5	63.4
62	84 – 86	267.0 – 273.6	262.2 – 268.7	3.6	1.54 – 1.58	96 – 102	15.8	63.4
63	84 – 86	272.9 – 279.6	267.9 – 274.5	3.7	1.54 – 1.58	95 – 101	16.2	63.4
64	83 – 86	278.7 – 285.6	273.5 – 280.3	3.8	1.54 – 1.58	95 – 101	16.6	63.5
65	83 – 85	284.5 – 291.6	279.1 – 286.0	3.9	1.54 – 1.58	95 – 101	16.9	63.5
66	83 – 85	290.3 – 297.5	284.6 – 291.8	4.0	1.54 – 1.58	95 – 101	17.3	63.6
67	82 – 84	296.0 – 303.4	290.1 – 297.4	4.2	1.54 – 1.58	94 – 100	17.6	63.6
68	82 – 84	301.8 – 309.3	295.6 – 303.0	4.3	1.54 – 1.58	94 – 100	18.0	63.6
69	82 – 84	307.5 – 315.1	301.1 – 308.6	4.4	1.54 – 1.58	94 – 100	18.3	63.6
70	81 – 83	313.2 – 321.0	306.5 – 314.2	4.5	1.54 – 1.58	93 – 99	18.7	63.6
71	81 – 83	318.9 – 326.8	311.9 – 319.7	4.7	1.54 – 1.58	93 – 99	19.0	63.6
72	81 – 83	324.5 – 332.6	317.3 – 325.3	4.8	1.54 – 1.58	93 – 99	19.4	63.6
73	81 – 82	330.2 – 338.3	322.7 – 330.7	4.9	1.54 – 1.58	93 – 99	19.7	63.6
74	80 – 82	335.8 – 344.1	328.1 – 336.2	5.0	1.54 – 1.58	92 – 98	20.0	63.7
75	80 – 82	341.4 – 349.8	333.4 – 341.6	5.1	1.54 – 1.58	92 – 98	20.4	63.7
76	79 – 82	346.9 – 355.5	338.6 – 347.0	5.3	1.54 – 1.58	92 – 98	20.7	63.7
77	79 – 81	352.5 – 361.2	343.8 – 352.4	5.4	1.54 – 1.58	91 – 97	21.0	63.7
78	78 – 81	357.9 – 366.9	349.0 – 357.8	5.5	1.54 – 1.58	91 – 97	21.4	63.8
79	78 – 80	363.4 – 372.5	354.2 – 363.1	5.6	1.54 – 1.58	91 – 97	21.7	63.8
80	77 – 80	368.8 – 378.1	359.2 – 368.3	5.7	1.54 – 1.58	91 – 97	22.0	63.8
81	76 – 79	374.1 – 383.6	364.2 – 373.5	5.9	1.55 – 1.59	91 – 97	22.3	63.8
82	76 – 79	379.4 – 389.1	369.2 – 378.7	6.0	1.55 – 1.59	90 – 96	22.7	63.8
83	75 – 78	384.7 – 394.6	374.2 – 383.9	6.1	1.55 – 1.59	90 – 96	23.0	63.8
84	74 – 77	389.8 – 400.0	379.0 – 388.9	6.2	1.55 – 1.59	90 – 96	23.3	63.8
85	74 – 77	395.0 – 405.4	383.9 – 394.0	6.3	1.55 – 1.59	90 – 96	23.6	63.8
86	73 – 76	400.1 – 410.7	388.7 – 399.0	6.4	1.55 – 1.59	90 – 96	23.9	63.8
87	72 – 75	405.2 – 415.9	393.4 – 403.9	6.5	1.55 – 1.59	89 – 95	24.2	63.8
88	72 – 75	410.2 – 421.2	398.1 – 408.8	6.6	1.55 – 1.59	89 – 95	24.5	63.8
89	71 – 74	415.2 – 426.4	402.7 – 413.6	6.7	1.55 – 1.59	89 – 95	24.8	63.8
90	70 – 73	420.1 – 431.5	407.3 – 418.4	6.8	1.55 – 1.59	89 – 95	25.1	63.8

* Egg weights after 40 weeks of age assume phase feeding of protein to limit egg size.

Performance Graph

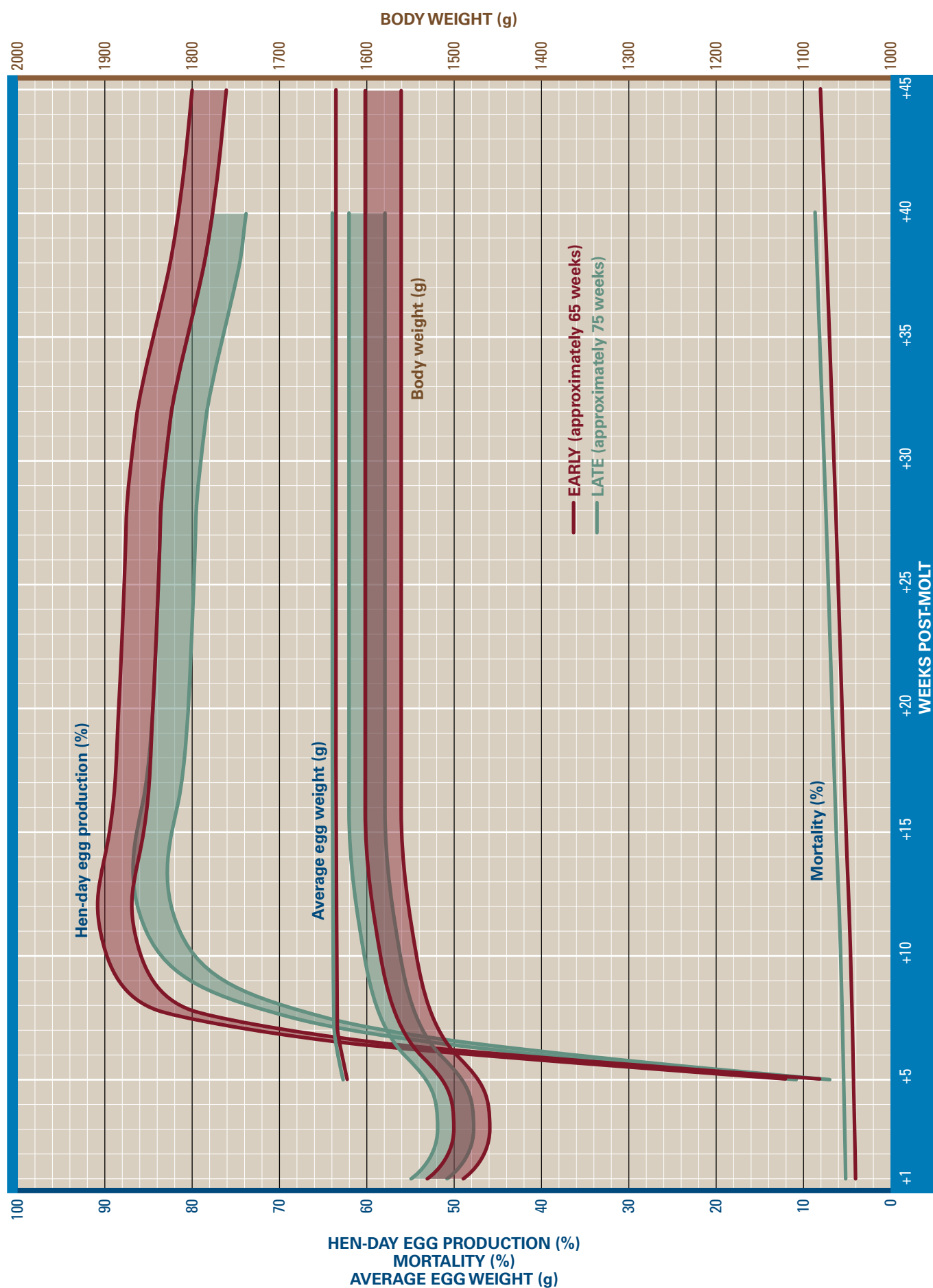


Post-Molt Performance Table

WEEKS POST MOLT	% HEN-DAY		HEN-DAY EGGS Cumulative		HEN-HOUSED EGGS		MORTALITY (%)		BODY WEIGHT (kg)		FEED INTAKE (g/day per bird)		HEN-HOUSED EGG MASS Cumulative (kg)		AVERAGE EGG WEIGHT* (g/ egg)	
	Early	Late	Early	Late	Early	Late	Early	Late	Early	Late	Early	Late	Early	Late	Early	Late
+1	–	–	279.3	336.1	280.6	328.4	4.0	5.2	1.51	1.53	47	50	16.7	20.1	–	–
+2	–	–	279.3	336.1	280.6	328.4	4.1	5.3	1.48	1.50	47	50	16.7	20.1	–	–
+3	–	–	279.3	336.1	280.6	328.4	4.2	5.4	1.48	1.50	64	67	16.7	20.1	–	–
+4	–	–	279.3	336.1	280.6	328.4	4.3	5.4	1.48	1.50	78	81	16.7	20.1	–	–
+5	10	9	280.0	336.7	281.3	329.0	4.4	5.5	1.49	1.51	85	88	16.7	20.1	62.5	62.7
+6	48	40	283.4	339.5	284.5	331.6	4.5	5.6	1.52	1.54	90	93	16.9	20.3	63.0	63.2
+7	73	61	288.5	343.8	289.4	335.7	4.6	5.6	1.54	1.56	95	98	17.3	20.6	63.5	63.7
+8	84	72	294.4	348.8	295.0	340.4	4.6	5.7	1.55	1.57	97	100	17.6	20.9	63.5	63.7
+9	87	79	300.4	354.4	300.8	345.6	4.7	5.8	1.56	1.58	99	102	18.0	21.2	63.5	63.7
+10	88	82	306.6	360.1	306.6	351.0	4.8	5.9	1.56	1.58	100	103	18.4	21.5	63.6	63.7
+11	88	83	312.8	365.9	312.5	356.5	4.9	6.0	1.57	1.59	100	103	18.7	21.9	63.6	63.8
+12	89	84	319.0	371.8	318.4	362.0	4.9	6.1	1.57	1.59	101	104	19.1	22.2	63.6	63.8
+13	89	85	325.2	377.8	324.3	367.6	5.0	6.1	1.57	1.59	101	104	19.5	22.6	63.6	63.8
+14	88	85	331.4	383.7	330.2	373.2	5.1	6.2	1.58	1.60	101	104	19.8	23.0	63.6	63.8
+15	87	84	337.5	389.6	336.0	378.7	5.2	6.3	1.58	1.60	101	104	20.2	23.3	63.6	63.8
+16	87	84	343.6	395.5	341.7	384.2	5.2	6.4	1.58	1.60	101	104	20.6	23.7	63.7	63.9
+17	87	83	349.7	401.3	347.5	389.6	5.3	6.5	1.58	1.60	101	104	21.0	24.0	63.7	63.9
+18	87	83	355.7	407.1	353.3	395.1	5.4	6.6	1.58	1.60	102	105	21.3	24.4	63.7	63.9
+19	87	83	361.8	412.9	359.0	400.5	5.5	6.7	1.58	1.60	102	105	21.7	24.7	63.7	63.9
+20	86	82	367.9	418.6	364.7	405.8	5.6	6.8	1.58	1.60	102	105	22.0	25.0	63.7	63.9
+21	86	82	373.9	424.4	370.4	411.2	5.7	6.9	1.58	1.60	102	105	22.4	25.4	63.7	63.9
+22	86	82	379.9	430.1	376.0	416.5	5.8	7.0	1.58	1.60	102	105	22.8	25.7	63.7	63.9
+23	86	82	385.9	435.9	381.7	421.8	5.9	7.1	1.58	1.60	102	105	23.1	26.1	63.7	63.9
+24	86	82	391.9	441.6	387.4	427.2	5.9	7.2	1.58	1.60	102	105	23.5	26.4	63.7	63.9
+25	86	82	398.0	447.3	393.0	432.5	6.0	7.3	1.58	1.60	102	105	23.9	26.7	63.7	63.9
+26	86	82	404.0	453.1	398.7	437.8	6.1	7.4	1.58	1.60	102	105	24.2	27.1	63.7	63.9
+27	86	82	410.0	458.8	404.3	443.1	6.2	7.5	1.58	1.60	102	105	24.6	27.4	63.7	63.9
+28	85	81	415.9	464.5	409.9	448.4	6.3	7.6	1.58	1.60	102	105	24.9	27.8	63.7	63.9
+29	85	81	421.9	470.2	415.5	453.6	6.4	7.7	1.58	1.60	102	105	25.3	28.1	63.7	63.9
+30	85	81	427.8	475.8	421.0	458.8	6.5	7.8	1.58	1.60	102	105	25.6	28.4	63.7	63.9
+31	85	81	433.8	481.5	426.6	464.0	6.6	7.9	1.58	1.60	102	105	26.0	28.8	63.7	63.9
+32	84	80	439.7	487.1	432.1	469.2	6.7	8.0	1.58	1.60	102	105	26.3	29.1	63.7	63.9
+33	84	80	445.6	492.7	437.5	474.3	6.8	8.1	1.58	1.60	102	105	26.7	29.4	63.7	63.9
+34	83	79	451.4	498.2	443.0	479.4	6.9	8.2	1.58	1.60	103	106	27.0	29.7	63.7	63.9
+35	82	78	457.1	503.7	448.3	484.4	7.0	8.3	1.58	1.60	103	106	27.4	30.1	63.8	63.9
+36	82	78	462.8	509.1	453.6	489.4	7.1	8.4	1.58	1.60	103	106	27.7	30.4	63.8	63.9
+37	81	77	468.5	514.5	458.9	494.4	7.2	8.5	1.58	1.60	103	106	28.0	30.7	63.8	63.9
+38	80	76	474.1	519.9	464.1	499.2	7.3	8.6	1.58	1.60	103	106	28.4	31.0	63.8	63.9
+39	80	76	479.7	525.2	469.3	504.1	7.4	8.8	1.58	1.60	103	106	28.7	31.3	63.8	63.9
+40	80	76	485.3	530.5	474.4	508.9	7.5	8.9	1.58	1.60	103	106	29.0	31.6	63.8	63.9
+41	79	–	490.8	–	479.5	–	7.7	–	1.58	–	103	–	29.4	–	63.8	–
+42	79	–	496.4	–	484.6	–	7.8	–	1.58	–	103	–	29.7	–	63.8	–
+43	79	–	501.9	–	489.7	–	7.9	–	1.58	–	103	–	30.0	–	63.8	–
+44	78	–	507.4	–	494.8	–	8.0	–	1.58	–	103	–	30.3	–	63.8	–
+45	78	–	512.8	–	499.8	–	8.1	–	1.58	–	103	–	30.7	–	63.8	–

Early: A molting program starting at approximately 65 weeks of age.
Late: A molting program starting at approximately 75 weeks of age.

Post-Molt Performance Graph

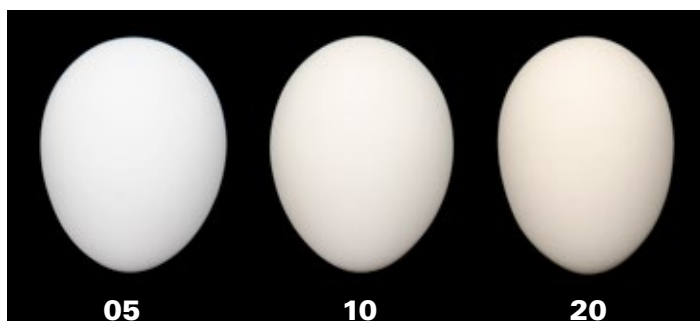


Egg Standards and Egg Size Distribution

EGG QUALITY			
AGE (weeks)	HAUGH UNITS	% SOLIDS	BREAKING STRENGTH
18	98.0	22.4	4280
20	97.6	22.9	4260
22	96.8	23.2	4250
24	96.0	23.5	4240
26	95.3	23.7	4220
28	94.6	23.9	4200
30	93.9	24.1	4180
32	93.2	24.3	4160
34	92.6	24.4	4140
36	92.0	24.5	4120
38	91.4	24.6	4110
40	90.8	24.6	4100
42	90.3	24.7	4090
44	89.7	24.7	4085
46	89.2	24.7	4080
48	88.9	24.7	4075
50	88.5	24.7	4070
52	88.1	24.7	4065
54	87.7	24.7	4060
56	87.5	24.7	4050
58	87.2	24.7	4045
60	87.0	24.7	4040
62	86.8	24.7	4030
64	86.6	24.7	4010
66	86.4	24.7	3990
68	86.2	24.7	3970
70	86.0	24.7	3955
72	85.8	24.7	3945
74	85.6	24.7	3940
76	85.4	24.7	3930
78	85.2	24.7	3920
80	85.0	24.7	3910

EGG SIZE DISTRIBUTION—E.U. STANDARDS					
AGE (weeks)	AVERAGE EGG WEIGHT (g)	% VERY LARGE Over 73 g	% LARGE 63–73 g	% MEDIUM 53–63 g	% SMALL 43–53 g
20	46.9	0.0	0.0	7.8	92.2
22	52.3	0.0	0.8	42.9	56.3
24	55.0	0.0	4.1	62.7	33.2
26	57.1	0.0	10.4	70.4	19.2
28	58.0	0.1	14.3	71.3	14.4
30	59.2	0.1	20.3	70.7	8.9
32	59.7	0.2	24.0	69.0	6.8
34	60.7	0.3	29.8	65.9	4.0
36	61.0	0.3	31.8	64.8	3.1
38	61.2	0.3	33.2	64.0	2.5
40	61.5	0.4	36.0	61.2	2.4
42	62.2	0.6	41.8	55.8	1.8
44	62.3	0.8	42.9	54.6	1.7
46	62.5	0.9	44.6	53.0	1.6
48	62.6	1.0	45.4	51.9	1.6
50	62.7	1.3	46.3	50.9	1.6
52	62.9	1.4	47.7	49.3	1.6
54	63.0	1.7	48.5	48.3	1.5
56	63.1	1.8	49.2	47.6	1.5
58	63.2	2.1	49.8	46.7	1.5
60	63.3	2.4	50.4	45.8	1.5
62	63.4	2.5	50.9	45.1	1.5
64	63.5	2.6	51.5	44.3	1.5
66	63.6	2.8	52.1	43.6	1.5
68	63.6	2.8	52.1	43.6	1.5
70	63.6	2.8	52.1	43.6	1.5
72	63.6	2.8	52.1	43.6	1.5
74	63.7	2.9	52.8	42.9	1.5
76	63.7	2.9	52.8	42.9	1.5
78	63.8	3.0	53.5	42.1	1.4
80	63.8	3.0	53.5	42.1	1.4
82	63.8	3.0	53.5	42.1	1.4
84	63.8	3.0	53.5	42.1	1.4
86	63.8	3.0	53.5	42.1	1.4
88	63.8	3.0	53.5	42.1	1.4
90	63.8	3.0	53.5	42.1	1.4

SHELL COLOR SCORES



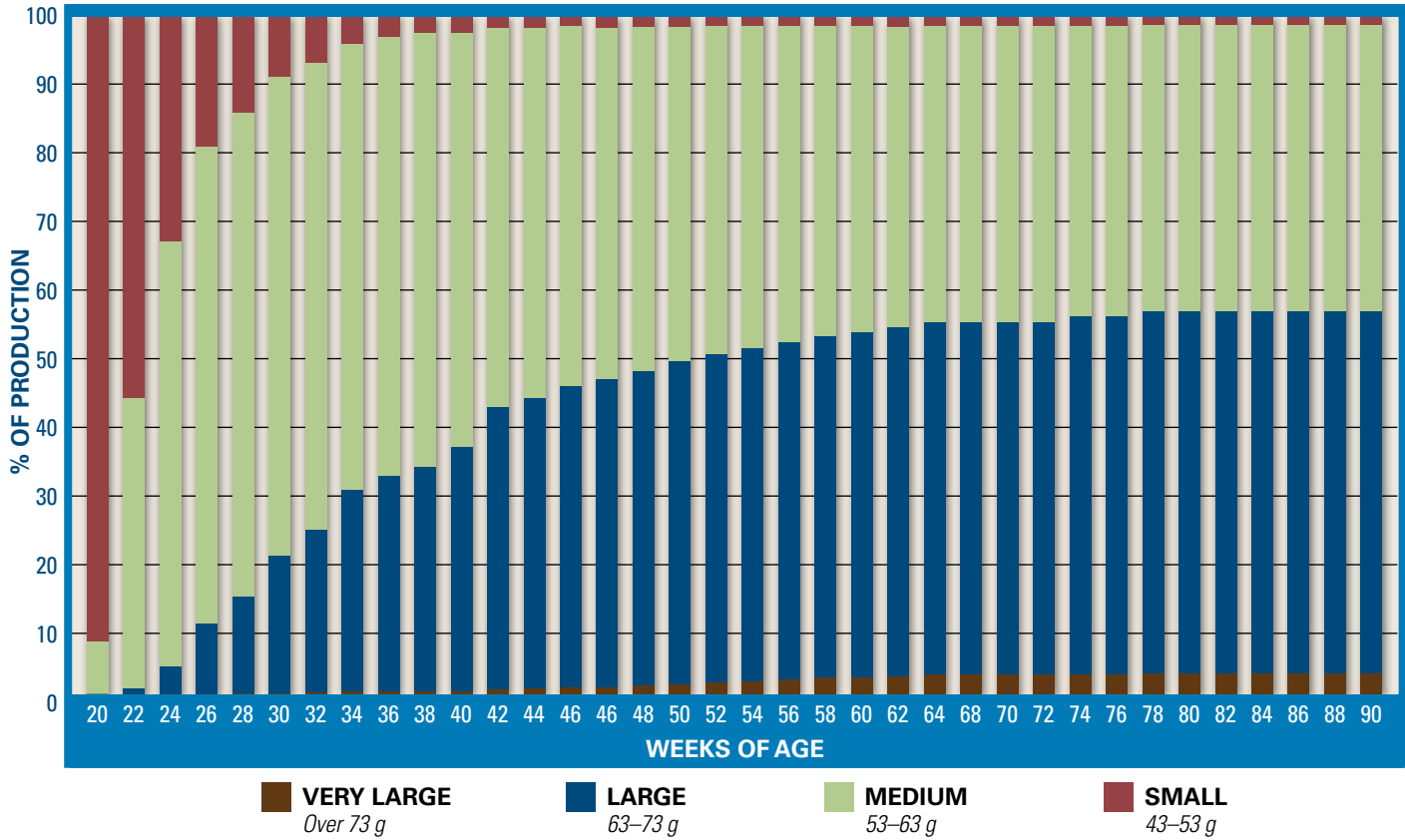
- The W-36 normally lays uniformly white colored eggs (05–10).
- Eggs laid the first week are typically darker (10–20) than subsequent eggs.

Egg Size Distribution *(continued)*

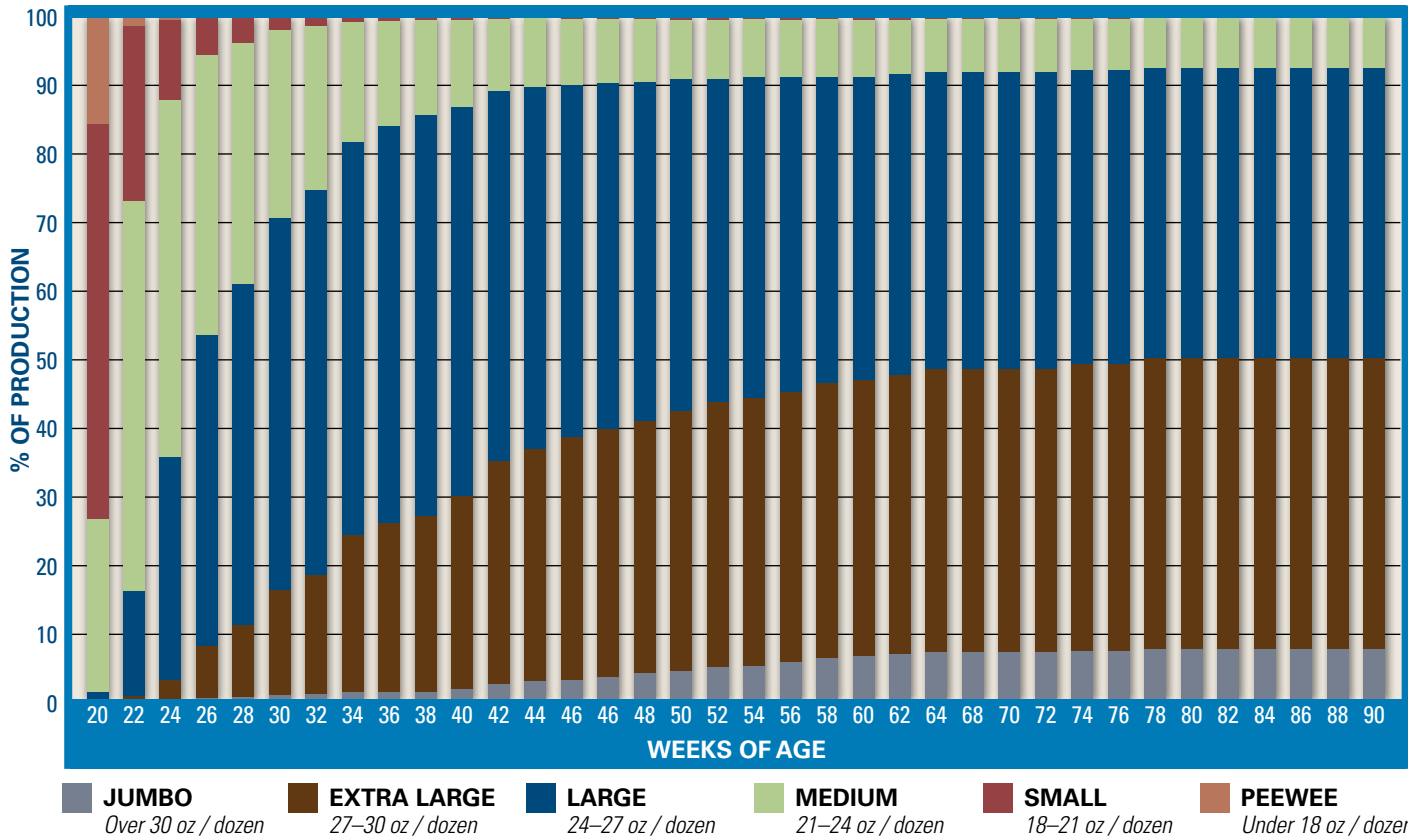
EGG SIZE DISTRIBUTION—U.S. STANDARDS							
AGE (weeks)	AVERAGE EGG WEIGHT (lbs. / case)	% JUMBO Over 30 oz. / dozen	% EXTRA LARGE 27–30 oz. / dozen	% LARGE 24–27 oz. / dozen	% MEDIUM 21–24 oz. / dozen	% SMALL 18–21 oz. / dozen	% PEEWEE Under 18 oz. / dozen
20	37.2	0.0	0.0	1.1	25.4	58.0	15.5
22	41.5	0.0	0.5	15.4	57.2	25.7	1.3
24	43.7	0.0	2.8	32.8	52.4	11.7	0.3
26	45.3	0.2	7.6	45.7	41.1	5.4	0.1
28	46.0	0.3	10.6	50.0	35.4	3.7	0.1
30	47.0	0.6	15.4	54.7	27.5	1.8	0.0
32	47.4	0.7	17.5	56.6	24.0	1.2	0.0
34	48.2	1.0	23.1	57.7	17.6	0.6	0.0
36	48.4	1.1	24.7	58.3	15.5	0.4	0.0
38	48.6	1.1	25.8	58.9	13.9	0.3	0.0
40	48.8	1.5	28.3	57.1	12.9	0.3	0.0
42	49.4	2.2	32.7	54.4	10.6	0.2	0.0
44	49.4	2.6	34.2	53.1	10.0	0.2	0.0
46	49.5	2.8	35.6	51.8	9.6	0.2	0.0
48	49.7	3.3	36.3	50.9	9.3	0.2	0.0
50	49.8	3.8	37.0	49.8	9.2	0.2	0.0
52	49.9	4.1	38.2	48.7	8.8	0.2	0.0
54	50.0	4.7	38.9	47.4	8.8	0.2	0.0
56	50.1	4.9	39.3	47.2	8.5	0.2	0.0
58	50.2	5.5	39.6	46.2	8.5	0.2	0.0
60	50.2	6.1	40.3	45.0	8.4	0.2	0.0
62	50.3	6.3	40.5	44.6	8.3	0.2	0.0
64	50.4	6.6	41.0	44.1	8.0	0.2	0.0
66	50.5	6.9	41.6	43.6	7.7	0.2	0.0
68	50.5	6.9	41.6	43.6	7.7	0.2	0.0
70	50.5	6.9	41.6	43.6	7.7	0.2	0.0
72	50.5	6.9	41.6	43.6	7.7	0.2	0.0
74	50.6	7.1	42.1	43.1	7.5	0.2	0.0
76	50.6	7.1	42.1	43.1	7.5	0.2	0.0
78	50.6	7.4	42.7	42.6	7.2	0.2	0.0
80	50.6	7.4	42.7	42.6	7.2	0.2	0.0
82	50.6	7.4	42.7	42.6	7.2	0.2	0.0
84	50.6	7.4	42.7	42.6	7.2	0.2	0.0
86	50.6	7.4	42.7	42.6	7.2	0.2	0.0
88	50.6	7.4	42.7	42.6	7.2	0.2	0.0
90	50.6	7.4	42.7	42.6	7.2	0.2	0.0

Egg Size Distribution *(continued)*

EGG SIZE DISTRIBUTION—E.U. STANDARDS



EGG SIZE DISTRIBUTION—U.S. STANDARDS



Post-Molt Egg Size Distribution

POST-MOLT EGG SIZE DISTRIBUTION—E.U. STANDARDS										
WEEKS POST MOLT	AVERAGE EGG WEIGHT (g)		% VERY LARGE Over 73 g		% LARGE 63–73 g		% MEDIUM 53–63 g		% SMALL 43–53 g	
	Early	Late	Early	Late	Early	Late	Early	Late	Early	Late
+6	63.0	63.2	2.9	3.1	51.1	52.4	44.0	42.6	2.0	1.9
+8	63.5	63.7	2.9	3.1	51.1	52.4	44.0	42.6	2.0	1.9
+10	63.6	63.7	3.3	3.6	51.4	52.7	43.3	42.0	2.0	1.8
+12	63.6	63.8	3.3	3.6	51.4	52.7	43.3	42.0	2.0	1.8
+14	63.6	63.8	3.5	3.8	51.4	52.7	43.1	41.7	2.0	1.8
+16	63.7	63.9	3.7	4.0	51.7	52.9	42.7	41.3	2.0	1.8
+18	63.7	63.9	3.7	4.0	51.7	52.9	42.7	41.3	2.0	1.8
+20	63.7	63.9	3.7	4.0	51.7	52.9	42.7	41.3	2.0	1.8
+22	63.7	63.9	3.7	4.0	51.7	52.9	42.7	41.3	2.0	1.8
+24	63.7	63.9	3.7	4.0	51.7	52.9	42.7	41.3	2.0	1.8
+26	63.7	63.9	3.7	4.0	51.7	52.9	42.7	41.3	2.0	1.8
+28	63.7	63.9	3.7	4.0	51.7	52.9	42.7	41.3	2.0	1.8
+30	63.7	63.9	3.7	4.0	51.7	52.9	42.7	41.3	2.0	1.8
+32	63.7	63.9	3.7	4.0	51.7	52.9	42.7	41.3	2.0	1.8
+34	63.7	63.9	3.8	4.0	52.3	52.9	42.0	41.3	1.9	1.8
+36	63.8	63.9	3.8	4.0	52.3	52.9	42.0	41.3	1.9	1.8
+38	63.8	63.9	3.8	4.0	52.3	52.9	42.0	41.3	1.9	1.8
+40	63.8	63.9	3.8	4.0	52.3	52.9	42.0	41.3	1.9	1.8

POST-MOLT EGG SIZE DISTRIBUTION—U.S. STANDARDS												
WEEKS POST MOLT	AVERAGE EGG WEIGHT (lbs. / case)		% JUMBO Over 30 oz. / dozen		% EXTRA LARGE 27–30 oz. / dozen		% LARGE 24–27 oz. / dozen		% MEDIUM 21–24 oz. / dozen		% SMALL 18–21 oz. / dozen	
	Early	Late	Early	Late	Early	Late	Early	Late	Early	Late	Early	Late
+6	50.0	50.2	7.0	7.0	40.7	41.7	43.2	42.6	8.9	8.4	0.3	0.3
+8	50.4	50.6	7.0	7.0	40.7	41.7	43.2	42.6	8.9	8.4	0.3	0.3
+10	50.5	50.6	7.7	7.9	40.8	41.8	42.5	41.7	8.7	8.3	0.3	0.3
+12	50.5	50.6	7.7	7.9	40.8	41.8	42.5	41.7	8.7	8.3	0.3	0.3
+14	50.5	50.6	8.1	8.2	40.9	41.9	42.1	41.3	8.7	8.3	0.3	0.3
+16	50.6	50.7	8.4	9.0	40.9	41.9	41.8	40.9	8.6	8.0	0.3	0.3
+18	50.6	50.7	8.4	9.0	40.9	41.9	41.8	40.9	8.6	8.0	0.3	0.3
+20	50.6	50.7	8.4	9.0	40.9	41.9	41.8	40.9	8.6	8.0	0.3	0.3
+22	50.6	50.7	8.4	9.0	40.9	41.9	41.8	40.9	8.6	8.0	0.3	0.3
+24	50.6	50.7	8.4	9.0	40.9	41.9	41.8	40.9	8.6	8.0	0.3	0.3
+26	50.6	50.7	8.4	9.0	40.9	41.9	41.8	40.9	8.6	8.0	0.3	0.3
+28	50.6	50.7	8.4	9.0	40.9	41.9	41.8	40.9	8.6	8.0	0.3	0.3
+30	50.6	50.7	8.4	9.0	40.9	41.9	41.8	40.9	8.6	8.0	0.3	0.3
+32	50.6	50.7	8.4	9.0	40.9	41.9	41.8	40.9	8.6	8.0	0.3	0.3
+34	50.6	50.7	8.7	9.0	41.4	41.9	41.3	40.9	8.3	8.0	0.3	0.3
+36	50.6	50.7	8.7	9.0	41.4	41.9	41.3	40.9	8.3	8.0	0.3	0.3
+38	50.6	50.7	8.7	9.0	41.4	41.9	41.3	40.9	8.3	8.0	0.3	0.3
+40	50.6	50.7	8.7	9.0	41.4	41.9	41.3	40.9	8.3	8.0	0.3	0.3

Early: A molting program starting at approximately 65 weeks of age.

Late: A molting program starting at approximately 75 weeks of age.

Feed Ingredient Table 1

INGREDIENT (as-fed basis)	DRY MATTER (%)	CRUDE PROTEIN (%)	FAT-ether extract (%)	CRUDE FIBER (%)	CALCIUM (%)	PHOSPHORUS total (%)	PHOSPHORUS available (%)	SODIUM (%)	CHLORIDE (%)	POTASSIUM (%)	SULFUR (%)	ME (kcal/lb)	ME (kcal/kg)	ME (MJ/kg)	LINOLEIC ACID (%)	CHOLINE (mg/kg)
Barley, grain	89.0	11.5	1.9	5.0	0.08	0.42	0.15	0.03	0.14	0.56	0.15	1250	2750	11.51	1.1	1027
Beans, broad (vicia faba)	89.0	25.7	1.4	8.2	0.14	0.54	0.20	0.08	0.04	1.20	—	1100	2420	10.13	0.9	1670
Calcium carbonate (38%Ca)	99.5	—	—	—	38.00	—	—	0.06	—	0.06	—	—	—	—	—	—
Canola meal (38%)	91.0	38.0	3.8	11.1	0.68	1.20	0.40	—	—	1.29	1.00	960	2110	8.83	0.6	6700
Canola oil	99.0	—	99.0	—	—	—	—	—	—	—	—	4000	8820	36.92	20.50	—
Corn, yellow, grain	86.0	7.5	3.5	1.9	0.01	0.28	0.12	0.02	0.04	0.33	0.08	1530	3373	14.12	1.9	1100
Corn gluten feed	88.0	21.0	2.0	10.0	0.20	0.90	0.22	0.15	0.22	1.30	0.16	795	1750	7.32	1.6	2420
Corn gluten meal (60%)	90.0	60.0	2.0	2.5	0.02	0.50	0.18	0.03	0.05	0.45	0.50	1700	3740	15.65	1.8	2200
Distillers dried grains, corn	92.0	27.0	9.0	13.0	0.09	0.41	0.17	0.25	0.07	0.16	0.43	910	2000	8.37	5.05	1850
Cottonseed meal (41%), mech. Extd	91.0	41.0	3.9	12.6	0.17	0.97	0.32	0.04	0.04	1.22	0.40	955	2100	8.79	0.8	2807
Cottonseed meal (41%), direct solv.	90.0	41.0	2.1	11.3	0.16	1.00	0.32	0.04	0.04	1.20	0.42	915	2010	8.41	0.4	2706
Dicalcium phosphate (18.5% P)	99.5	—	—	—	22.00	18.50	18.50	0.08	—	0.07	—	—	—	—	—	—
DL-Methionine	99.5	58.1	—	—	—	—	—	—	—	—	—	2277	5020	21.01	—	—
Fat, animal	99.0	—	98.0	—	—	—	—	—	—	—	—	3600	7920	33.15	—	—
Fat, animal-vegetable blend	98.0	—	92.0	—	—	—	—	—	—	—	—	3800	8379	35.07	30.00	—
Fat, vegetable	99.0	—	99.0	—	—	—	—	—	—	—	—	4000	8800	36.83	40.00	—
Fish meal, anchovy, Peruvian	91.0	65.0	10.0	1.0	4.00	2.85	2.85	0.88	0.60	0.90	0.54	1280	2820	11.80	0.1	5100
Fish meal, white	91.0	61.0	4.0	1.0	7.00	3.50	3.50	0.97	0.50	1.10	0.22	1180	2600	10.88	0.1	4050
Flaxseed	92.0	22.0	34.0	6.5	0.25	0.50	—	0.08	—	1.50	—	1795	3957	16.56	54.00	3150
Linseed meal flax (expeller)	90.0	32.0	3.5	9.5	0.40	0.80	—	0.11	—	1.24	0.39	700	1540	6.45	0.5	1672
Linseed meal flax (solvent)	88.0	33.0	0.5	9.5	0.35	0.75	—	0.14	—	1.38	0.39	635	1400	5.86	0.1	1760
L-Lysine-HCl	99.5	93.4	—	—	—	—	—	—	—	—	—	1868	4120	17.24	—	—
L-Threonine	99.5	72.4	—	—	—	—	—	—	—	—	—	1619	3570	14.94	—	—
L-Tryptophan	95.0	84.0	—	—	—	—	—	—	—	—	—	2653	5850	24.49	—	—
Meat and bone meal, 50%	93.0	50.0	8.5	2.8	9.20	4.70	4.70	0.80	0.75	1.40	0.40	1150	2530	10.59	0.5	2000
Mono-dicalcium phosphate (21% P)	99.5	—	—	—	16.00	21.00	—	0.05	—	0.06	—	—	—	—	—	—
Oats, grain	90.0	11.0	4.0	10.5	0.10	0.35	0.14	0.07	0.12	0.37	0.21	1160	2550	10.67	2.4	1070
Peanut meal, solvent	90.0	47.0	2.5	8.4	0.08	0.57	0.18	0.07	0.03	1.22	0.30	1217	2677	11.20	0.5	1948
Poultry byproduct meal (feed grade)	94.0	57.0	14.0	2.5	5.00	2.70	2.70	0.30	0.55	0.60	0.50	1406	3100	12.98	0.7	5980
Rice bran, unextracted	91.0	13.5	5.9	13.0	0.10	1.70	0.24	0.10	0.07	1.35	0.18	925	2040	8.54	5.2	1390
Rice, grain, rough	89.0	7.3	1.7	10.0	0.04	0.26	0.09	0.04	0.06	0.34	0.10	1335	2940	12.31	0.83	1014
Safflower seed meal, expeller	91.0	20.0	6.6	32.2	0.23	0.61	0.20	0.05	0.16	0.72	0.10	525	1160	4.86	—	800
Salt, NaCl	99.6	—	—	—	—	—	—	39.34	60.66	—	—	—	—	—	—	—
Sodium bicarbonate, NaHCO ₃	99.0	—	—	—	—	—	—	27.38	—	—	—	—	—	—	—	—
Sorghum, milo, grain	89.0	11.0	2.8	2.0	0.04	0.29	0.10	0.03	0.09	0.34	0.09	1505	3310	13.85	1.3	678
Soybeans, full-fat, cooked	90.0	38.0	18.0	5.0	0.25	0.59	0.20	0.04	0.03	1.70	0.30	1520	3350	14.02	9.9	2420
Soybean meal, expeller	89.0	42.0	3.5	6.5	0.20	0.60	0.20	0.04	0.02	1.71	0.33	1100	2420	10.13	1.8	2673
Soybean meal, solvent	90.0	44.0	0.5	7.0	0.25	0.60	0.20	0.04	0.02	1.97	0.43	1020	2240	9.38	0.3	2743
Soybean meal dehulled, solvent	88.0	47.8	1.0	3.0	0.31	0.72	0.24	0.04	0.02	2.05	0.43	1115	2458	10.29	0.6	2850
Soybean oil	99.0	—	99.0	—	—	—	—	—	—	—	—	4000	8820	36.92	40.00	—
Sunflower meal, expeller	93.0	41.0	7.6	21.0	0.43	1.00	0.25	0.20	0.01	1.00	—	1050	2310	9.67	6.5	—
Sunflower meal, partially dehul, solv.	92.0	34.0	0.5	13.0	0.30	1.25	0.27	0.20	0.01	1.60	0.38	1025	2260	9.46	0.2	1909
Triticale	90.0	12.5	1.5	—	0.05	0.30	0.10	—	0.07	—	0.20	1430	3150	13.18	0.9	460
Wheat, hard grain	88.0	13.5	1.9	3.0	0.05	0.41	0.12	0.06	0.07	0.50	0.10	1440	3170	13.27	1.0	778
Wheat, soft grain	86.0	10.8	1.7	2.8	0.05	0.30	0.11	0.06	0.07	0.40	0.10	1460	3210	13.44	1.0	778
Wheat bran	89.0	14.8	4.0	10.0	0.14	1.17	0.38	0.06	0.14	1.20	0.22	590	1300	5.44	2.1	980
Wheat middlings	89.0	15.0	3.6	8.5	0.15	1.17	0.45	0.06	0.07	0.60	0.16	950	2090	8.75	1.9	1100

Nutrient recommendations are based on calculations using these energy and nutrient values (source: 2015 Feedstuffs Reference Issue and field data). Values provided are “typical” based on ingredient surveys. Nutrient values should be confirmed by analysis of the materials being used in order to maintain an accurate formulation matrix.

Feed Ingredient Table 2

INGREDIENT (as-fed basis)	CRUDE PROTEIN (%)	LYSINE (%)		METHIONINE (%)		CYSTINE (%)		THREONINE (%)		TRYPTOPHAN (%)		ARGININE (%)		ISOLEUCINE (%)		VALINE (%)	
		Total content	Digestible content	Total content	Digestible content	Total content	Digestible content	Total content	Digestible content	Total content	Digestible content	Total content	Digestible content	Total content	Digestible content	Total content	Digestible content
Barley	11.5	0.40	0.35	0.18	0.16	0.24	0.21	0.38	0.32	0.14	0.10	0.56	0.48	0.39	0.35	0.55	0.46
Beans, Field	25.7	1.61	1.37	0.18	0.13	0.30	0.20	0.88	0.69	0.22	0.15	2.27	1.97	1.02	0.74	1.15	0.83
Corn	7.5	0.23	0.21	0.16	0.15	0.17	0.15	0.27	0.23	0.06	0.05	0.36	0.34	0.25	0.24	0.35	0.32
Corn Gluten Feed	21.0	0.65	0.47	0.34	0.29	0.44	0.29	0.75	0.57	0.10	0.09	0.96	0.85	0.62	0.51	0.99	0.83
Corn Gluten Meal	60.0	0.99	0.75	1.43	1.26	1.03	0.80	2.00	1.58	0.32	0.21	1.88	1.62	2.39	2.05	2.71	2.30
Dist Dried Grains & Sol, Corn	27.0	0.76	0.57	0.53	0.43	0.50	0.38	1.01	0.72	0.22	0.17	1.16	0.85	0.99	0.83	1.31	1.06
Cottonseed Meal	41.0	1.63	1.06	0.58	0.42	0.65	0.48	1.27	0.86	0.51	0.40	4.67	4.11	1.25	0.89	1.75	1.29
DL-Methionine	58.1	—	—	99.00	99.00	—	—	—	—	—	—	—	—	—	—	—	—
Fish Meal (65%)	65.0	4.67	4.02	1.72	1.48	0.54	0.39	2.61	2.08	0.66	0.52	3.71	3.04	2.60	2.21	3.05	2.53
Fish Meal (61%)	61.0	4.24	3.65	1.57	1.35	0.50	0.36	2.39	1.92	0.60	0.47	3.45	2.83	2.39	2.03	2.82	2.34
Linseed Products	22.0	0.92	0.83	0.39	0.31	0.37	0.29	0.80	0.73	0.33	0.30	1.99	1.83	0.90	0.79	1.07	0.92
L-Lysine-HCl	93.4	78.80	78.80	—	—	—	—	—	—	—	—	—	—	—	—	—	—
L-Threonine	72.4	—	—	—	—	—	—	98.50	98.50	—	—	—	—	—	—	—	—
L-Tryptophan	84.0	—	—	—	—	—	—	—	—	98.00	98.00	—	—	—	—	—	—
Meat And Bone Meal	50.0	2.33	1.61	0.65	0.46	0.41	0.20	1.53	0.95	0.29	0.15	3.45	2.66	1.36	0.94	2.02	1.42
Oats	11.0	0.44	0.39	0.18	0.15	0.31	0.26	0.37	0.31	0.15	0.12	0.72	0.67	0.40	0.35	0.54	0.48
Peanut Meal	47.0	1.50	1.14	0.49	0.42	0.59	0.47	1.20	1.02	0.46	0.40	5.19	4.72	1.50	1.34	1.82	1.62
Poultry Byproduct Meal	57.0	3.40	2.72	1.10	0.92	0.72	0.49	2.21	1.70	0.55	0.43	3.78	3.17	2.17	1.74	2.70	2.13
Rapeseed Meal	38.0	1.95	1.56	0.73	0.61	0.92	0.71	1.55	1.13	0.52	0.41	2.32	2.02	1.46	1.15	1.86	1.47
Rice	7.3	0.26	0.21	0.19	0.17	0.17	0.14	0.25	0.20	0.09	0.08	0.57	0.52	0.28	0.23	0.40	0.34
Rice Bran	13.5	0.61	0.45	0.26	0.20	0.27	0.19	0.50	0.34	0.17	0.13	1.05	0.90	0.46	0.35	0.71	0.53
Safflower Meal	20.0	0.59	0.49	0.30	0.26	0.32	0.25	0.62	0.45	0.19	0.15	1.66	1.40	0.70	0.56	1.00	0.81
Sorghum	11.0	0.25	0.23	0.19	0.17	0.19	0.15	0.35	0.29	0.12	0.11	0.41	0.36	0.43	0.38	0.53	0.47
Soybean Expeller	42.0	2.50	2.25	0.58	0.52	0.62	0.51	1.64	1.39	0.52	0.50	2.94	2.73	1.88	1.67	1.99	1.75
Soybean Meal (44%)	44.0	2.71	2.44	0.59	0.54	0.63	0.52	1.73	1.47	0.60	0.54	3.20	2.98	1.99	1.77	2.09	1.84
Soybean Meal (47.8%)	47.8	2.91	2.62	0.64	0.58	0.68	0.56	1.86	1.58	0.64	0.57	3.49	3.24	2.17	1.93	2.26	1.99
Soybean, full-fat	38.0	2.40	2.09	0.54	0.48	0.55	0.43	1.69	1.39	0.52	0.45	2.80	2.52	2.18	1.87	2.02	1.72
Sunflower Meal (34%)	34.0	1.17	1.02	0.74	0.68	0.55	0.44	1.22	1.00	0.45	0.39	2.75	2.56	1.37	1.22	1.65	1.43
Sunflower Meal (41%)	41.0	1.37	1.19	0.88	0.81	0.66	0.53	1.45	1.19	0.54	0.47	3.42	3.18	1.66	1.48	1.99	1.73
Triticale	12.5	0.38	0.33	0.20	0.18	0.27	0.23	0.38	0.33	0.13	0.11	0.61	0.50	0.41	0.38	0.54	0.47
Wheat (13.5%)	13.5	0.36	0.31	0.20	0.19	0.29	0.26	0.38	0.33	0.16	0.14	0.64	0.54	0.45	0.37	0.56	0.50
Wheat (10.8%)	10.8	0.31	0.27	0.17	0.15	0.25	0.22	0.31	0.27	0.14	0.12	0.52	0.44	0.36	0.29	0.46	0.41
Wheat Bran	14.8	0.60	0.43	0.22	0.17	0.30	0.22	0.48	0.35	0.24	0.19	1.00	0.82	0.46	0.36	0.67	0.52
Wheat Middlings	15.0	0.60	0.48	0.23	0.19	0.30	0.22	0.48	0.35	0.21	0.17	1.00	0.80	0.47	0.39	0.69	0.53

Amino acid digestibility is standardized ileal digestibility. Amino acid values are standardized for 88% dry matter (Source: Evonik AminoDAT® 4.0, 2010). Values provided are “typical” based on ingredient surveys. Nutrient values should be confirmed by analysis of the materials being used in order to maintain an accurate formulation matrix.

Hy-Line International Welfare Goals and Principles

To promote animal well-being and produce birds of the highest quality, we adhere to the following welfare goals and principles. These goals and principles are the essential building blocks for the humane and professional care of our birds:

- **Feed and Water**

Provide access to good quality water and nutritionally balanced diets at all times

- **Health and Veterinary Care**

Provide science-based health programs and prompt veterinary care

- **Environment**

Provide shelter that is designed, maintained and operated to meet the bird's needs and to facilitate daily inspection

- **Husbandry and Handling Practices**

Provide comprehensive care and handling procedures that ensure the bird's well-being throughout its life

- **Transportation**

Provide transportation that minimizes travel time and stress

RESOURCES

Corporate Information, Technical Updates and Product Updates available at www.hyline.com

Hy-Line Red Book, *an Online Management Guide* www.hylineredbook.com

Hy-Line International Lighting Program www.hylineweblighting.com

Hy-Line EggCel www.hylineeggcel.com

Hy-Line Bodyweight Uniformity Calculator www.hylinebodyweight.com

TECHNICAL UPDATES

Growing Management of Commercial Pullets

Understanding the Role of the Skeleton in Egg Production

The Science of Egg Quality

An Overview of Focal Duodenal Necrosis

MG Control in Commercial Layers

Colibacillosis in Layers

Proper Collection and Handling of Diagnostic Samples

Understanding Poultry Lighting: A Guide to LED Bulbs and Other Sources of Light for Egg Producers

PRODUCT UPDATES

Effects of Nutrient Density on Hy-Line W-36 Performance

Managing the Hy-Line W-36 Commercial Layer in a Single Lay Cycle



Hy-Line

Hy-Line International | www.hyline.com

